

# Asset Manager: Asset Management



*Asset Manager provides full lifecycle asset management that is flexible, automated, and real-time. It is ideal for most any type of asset in most any type of industry. With Asset Manager, your asset management capabilities can finally match your business needs.*

## Features & Benefits

- ◆ Enterprise Ready Platform
- ◆ Life Cycle Asset Management
- ◆ Advanced Data Management
- ◆ Data Access Control
- ◆ Spreadsheet Friendly
- ◆ Exception Based Reporting
- ◆ Robust Communications Architecture
- ◆ Flexible Configuration Options
- ◆ Asset Type Agnostic
- ◆ Integration Ready
- ◆ Intuitive Web Interface
- ◆ Mobile App Support

Asset Manager is a flexible asset management platform designed around RF Code's active RFID hardware components. When utilized with RF Code's hardware, Asset Manager combines real-time asset tracking and visibility with sophisticated asset management software capabilities for a complete end-to-end solution. The solution is flexible enough to manage all types of assets from IT assets to logistics containers. Asset Manager provides the real-time view of where assets are and the details behind each asset itself. Furthermore, it provides the capabilities to find and manage exceptions in large populations of assets.

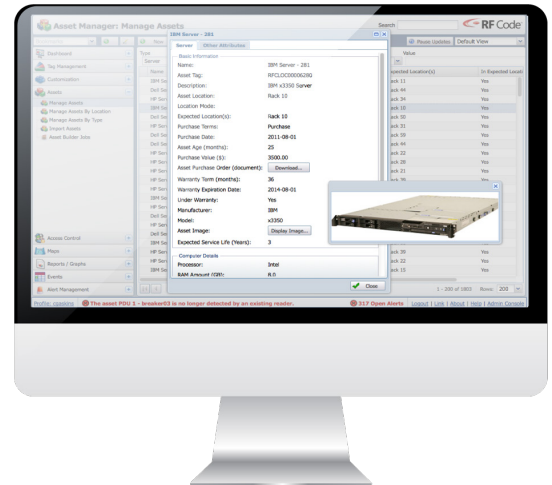
## Enhanced Lifecycle Management

Asset Manager makes it simple to manage your assets from deployment to retirement. Easily view asset information across departments, buildings, or entire organizations. Current and historical asset attributes—financial data, physical location and contractual information, for example— reside in an SQL database, enabling complete asset lifecycle management. Asset data can even be displayed in Asset Manager's Map View, providing a graphical navigation of asset locations as well as a summary of asset information for each map.

When deployed with RF Code's active RFID tags and readers, physical asset location is tracked in real-time and automatically. Real-time physical asset location data can quickly locate and identify equipment for the purposes of inventory collection, maintenance and service. Automated reports can provide daily and weekly summaries of asset changes and exceptions. Thresholds and alerts can be configured for immediate notification of asset location or condition changes, delivering cost- and time-saving benefits.

## Advanced Data Management

Asset Manager provides powerful data management capabilities via a completely customizable data schema. The graphical schema editor allows the types of assets to be



organized and customized to fit a wide range of needs. Furthermore, complete control over the attributes associated with each asset type makes it simple to tailor the solution to specific requirements. Asset Manager supports a wide variety of attributes such as strings, numerics, Boolean, date/time, pick lists, URLs, and binary objects. Through an advanced attribute type called Calculated Attributes, Asset Manager can utilize formulas to automatically calculate information such as warranty expiration dates and number of days till service required. Once the synthesized data is computed, it can be dynamically associated with the appropriate asset. Every single attribute in the system (standard or custom) can be utilized by all other aspects of the product be it table views, thresholds, reports, dashboards and graphs enabling quick and easy access to critical asset information.

## Data Access Control

Organizations can segment data views and use (dashboard functions, asset view, map view, reports, graphs, alerts and more) as well as read-only, edit, and create capability according to an individual user's organizational role and function. The result is a tighter, more secure asset management process. For outsourcers looking to provide a secure way to offer asset management and tracking as a service, data segmentation enables them to maintain

Ready for

**IBM | Tivoli**

software

“firewall” like separation between their different customers’ asset inventories they’re managing using RF Code. For large enterprise customers, the fine-grained access control capability allows separation and security for internal organizations as well. Asset Manager fully integrates with LDAP and Active Directory systems enabling centralized management of authentication information and assignment of roles.

### Spreadsheet Friendly

Most asset managers store or manipulate asset information (especially inventory data) in spreadsheets. RF Code understands the value of using spreadsheets and has incorporated this concept into Asset Manager. Asset Manager can easily export tabular information to spreadsheets for

even more powerful and flexible reporting and charting capabilities. All of this enables automated exception based reporting which leads to proactive asset management.

### Robust Communications Architecture

Asset Manager features enhanced data gathering functionality, including UpConnect support for RF Code M250 readers. With UpConnect, M250 readers in remote locations can initiate the TCP/IP connection with Asset Manager, enabling RF Code infrastructure in remote locations to easily traverse firewalls.

Asset Manager also supports remote data store-and-forward capabilities when deployed in a multisite configuration with a single Asset Manager server being serviced by multiple remote Zone Manager systems. The remote data store-and-forward

Name	Asset Type	Asset Tag	Asset Location	Expected Location(s)	In Expected Location	Online Status
IBM Server - 321	Server	RFLOC00006320	Rack 11	Rack 11	Yes	Yes
Dell Server - 106	Server	RFLOC00007305	Rack 44	Rack 44	Yes	Yes
HP Server - 400	Server	RFLOC00006999	Rack 34	Rack 34	Yes	Yes
IBM Server - 281	Server	RFLOC00006280	Rack 10	Rack 10	Yes	Yes
Dell Server - 299	Server	RFLOC00007498	Rack 50	Rack 50	Yes	Yes
HP Server - 327	Server	RFLOC00006926	Rack 31	Rack 31	Yes	Yes
Dell Server - 552	Server	RFLOC00007751	Rack 59	Rack 59	Yes	Yes
Dell Server - 120	Server	RFLOC00007319	Rack 44	Rack 44	Yes	Yes
HP Server - 56	Server	RFLOC00006655	Rack 22	Rack 22	Yes	Yes
HP Server - 215	Server	RFLOC00006814	Rack 28	Rack 28	Yes	Yes
HP Server - 27	Server	RFLOC00006626	Rack 21	Rack 21	Yes	Yes
HP Server - 567	Server	RFLOC00007166	Rack 39	Rack 39	Yes	Yes
HP Server - 339	Server	RFLOC00006938	Rack 32	Rack 32	Yes	Yes
IBM Server - 371	Server	RFLOC00006370	Rack 13	Rack 13	Yes	Yes
HP Server - 164	Server	RFLOC00006763	Rack 26	Rack 26	Yes	Yes
Dell Server - 98	Server	RFLOC00007297	Rack 44	Rack 44	Yes	Yes
HP Server - 279	Server	RFLOC00006878	Rack 30	Rack 30	Yes	Yes

further analysis, filtering and reporting. Furthermore, changes can be made to the data and then re-imported simplifying mass changes and enabling Asset Manager to integrate with existing workflows and processes.

### Exception Based Processing with Reports and Alerts

Large enterprises have extremely large numbers of assets and not all of these assets need daily attention or action so the problem becomes finding the ones that do. Asset Manager is designed for exception based filtering and reporting. The result is the ability to easily find a collection of assets that meet specific criteria such as a group of assets that changed location in the last 24 hours, group of assets that have passed their service date or a group of assets that were installed in the wrong location. Automated views, reports, and alerts can all be configured to highlight assets that meet specific criteria eliminating manual searching through rows and rows of data.

Reports can be run on a schedule as well as an Ad Hoc basis and the output can be formatted as PDF, XML or CSV. Furthermore, report output files can be delivered via FTP, SCP & HTTP. In addition the Advanced Reporting Module for Asset Manager, which utilizes the powerful open source BIRT reporting engine, provides

feature enables all historical data to be stored locally by the Zone Manager system until a connection with Asset Manager is successful. This ensures the integrity of all tag location changes and environmental monitoring data, even during a network outage.

### Integration Ready

Asset Manager is designed to be an open or “integration friendly” platform. A complete set of open API’s is available that can enable almost any application to integrate with Asset Manager. The API’s are web REST based allowing data exchanges in either XML or JSON. The Asset Manager API not only allows information to be extracted from but also allows information to be inserted enabling tight integrated with other enterprise systems.

RF Code and RF Code partners have created off-the-shelf integration modules to allow data sharing between standard applications. Some of these integration modules utilize industry standard data exchange protocols such as JMX, OPC, Modbus, and BACnet. Other modules are specifically designed for 3rd party applications. Refer to the RF Code website for more details on integration modules and RF Code partners.