



Ceiling Mount For S14D/S15D Sensor Modules



- For surveillance of long and narrow spaces (e.g., bus, train, hallway, etc.)
- Two sensor modules are integrated in the mount (S14D or S15D)
- Concealed cabling, weatherproof from -30 to +60 °C (IP65)
- Suitable for ceiling installation, with a 25° tilt of the lenses

Installation

Before installing the sensor modules, make sure that the sensor cables will reach the intended mounting position without placing a strain on the cables. Separate the sensor modules from the sensor cables before installing the modules. Further information on the individual camera connectors can be found in Section 2.2.1, "Overview Of Cable Connections" of the S14/S15 camera manuals. Install the base module as described in Section 2.3.1.

1. Prepare opening

Prepare an opening at the desired mounting position of the SurroundMount that is large enough (diameter about 30 to 40 mm) to allow the sensor cables to pass through so that you can connect them.

2. Lead the sensor cables through the opening

Lead the sensor cables through the opening in the ceiling and allow them to protrude through (the longer they extend, the easier the installation).

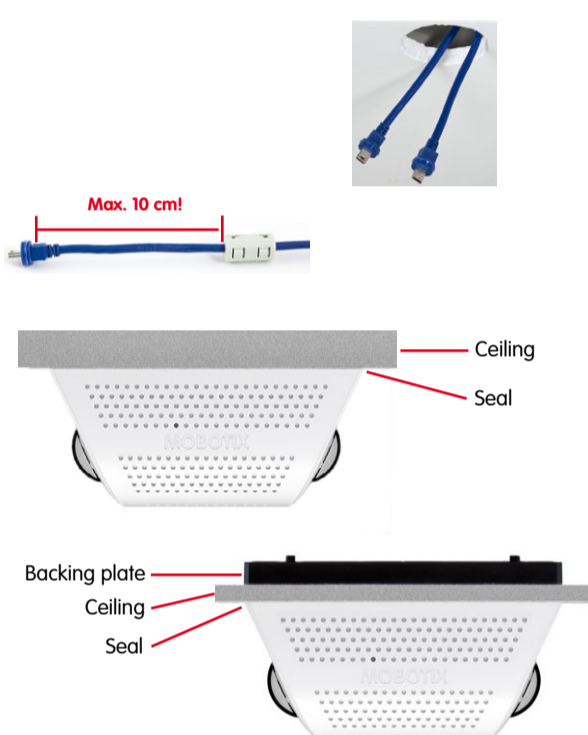
3. Attach the hinged ferrites

Attach one hinged ferrite to each sensor cable (maximal distance to the connector 10 cm).

4. Select mounting type

Select the appropriate mounting type. Depending on the material and the thickness of the mounting surface, you can mount the SurroundMount

- **directly** to the ceiling using the four **stainless steel wood screws** (item 1.6) with or without the **dowels** (item 1.7).
- to the ceiling (max. thickness 12 mm) using the **backing plate** (item 1.2) and the four **stainless steel Allen screws** (item 1.8). To do this, you have to push the screws through the ceiling and tighten them to the backing plate positioned to the back of the ceiling.



5. Set dowels or prepare screw holes

Depending on the desired mounting type, you either set the dowels or prepare screw holes (for the backing plate). In the second case, you can either use the drilling template provided at the end of this document or use the backing plate with its four threaded bushings as a drilling template.

6. Mount the housing

Place the **seal** (item 1.3) on the **SurroundMount housing** (item 1.1). Attach the housing with or without **dowels** (item 1.7) to the ceiling using the **stainless steel wood screws** (item 1.6). When using the **backing plate** (behind ceiling boards or roof linings) use the **stainless steel Allen screws** (item 1.8). You will need a **cross-tip screwdriver** for the wood screws; for the Allen screws you will need the **3 mm Allen wrench** provided in the package. Because space is limited in the housing, **cross the sensor cables** and leave the **hinged ferrites outside** the housing.

7. Connect sensor cables

Connect a sensor cable to each sensor module (one cable through each opening of the housing). Insert the sensor cable in the socket of the module, attach the bayonet catch and turn it to the right until it clicks into place.

8. Attach sensor modules

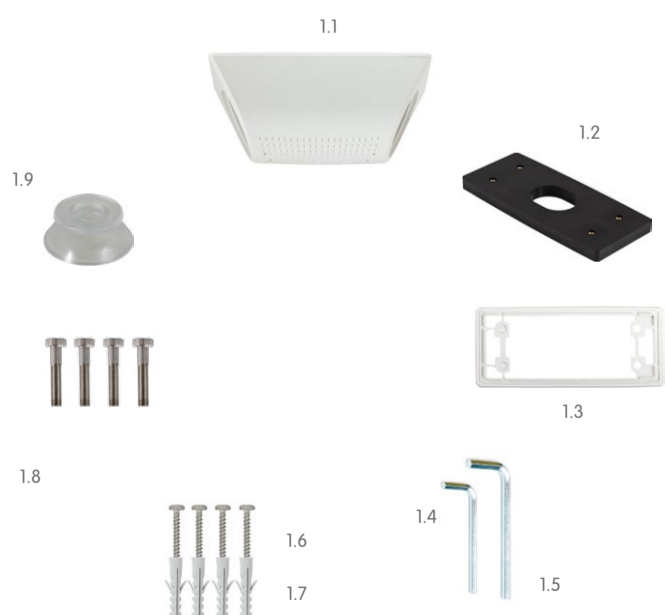
Make sure that the MOBOTIX lettering on the front of the sensor module is pointing to the "9-o'clock position" as shown in the figure. Turn the sensor module with the black module wrench (provided with the S15D) to the right until it reaches the stop.

9. Secure sensor modules

Tighten the four set screws on the underside of the housing to secure each of the sensor modules. To do this, use the provided 1.5 mm Allen wrench. **Warning: Do not overtighten the screws (plastic housing!).**



Delivered Parts



Item	Number	Part Name
1.1	1	Housing
1.2	1	Backing plate
1.3	1	Seal
1.4	1	Allen wrench 1.5 mm
1.5	1	Allen wrench 3 mm
1.6	4	Stainless steel wood screws 4x40
1.7	4	Dowels 6 mm
1.8	4	Stainless steel Allen screws M4x30
1.9	1	Removal tool

