

# StruxureWare™ Data Center Expert

## Data Center Infrastructure Management (DCIM) Software

End to end data center infrastructure management software for monitoring and control of power, cooling, security and energy usage from the building through IT systems

[www.apc.com/struxureware](http://www.apc.com/struxureware)

Life Is On

**Schneider**  
Electric

## StruxureWare Data Center Expert



**Instant fault notification and escalation enable quick resolution of critical infrastructure events.**

Whether located in a data center, remote office, or campus environment, Data Center Expert and the Schneider Electric power, cooling, environmental, and security devices combine to provide a comprehensive centralized monitoring solution.

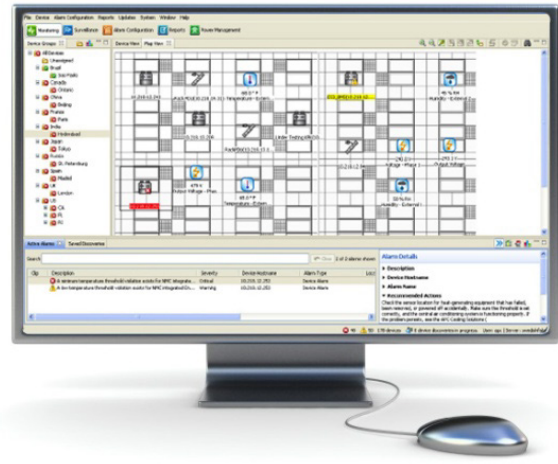
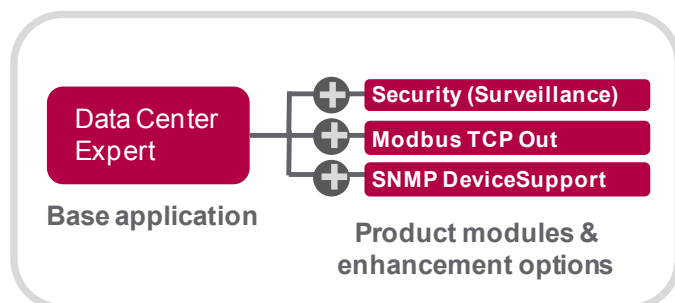
With Data Center Expert power readings, environmental readings and camera images from any site on your network are tied in together into a common management platform. Images and alerts from around the company can be instantly viewed and managed, trends analyzed, and problems averted, providing unparalleled physical threat management.

### Integrated with Power and Building Management

Integrate with Building Operation and Power Monitoring Expert for information on the health of critical support systems in the electrical and mechanical rooms as well as power quality and electrical distribution.

### Web Services API

Ready access to Data Center Expert alerts, data, reports and trending through existing dashboards or create custom portals for financial, operational or other views.



Data Center Expert is easy to use and deploy with a user-friendly interface to monitor, manage and control the hundreds or thousands of devices a company might have from a wide range of manufacturers. These devices include equipment that provides power, cooling, security and environmental monitoring.

### Centralized monitoring & alerts

- > Multi-vendor support for monitoring any networked device from any manufacturer
- > Real-time monitoring and instant fault notification and escalation enable quick resolution of critical infrastructure events.
- > Centralized repository of critical information accessible by multiple users from anywhere on the network.
- > Future trending for bringing new insights into your infrastructure's health, planning and budgeting.
- > Customized alarming and escalation by device, by rack, or by location to the right people at the right time.
- > Open and flexible architecture which expands with changing business needs through additional device licenses, add-on surveillance, operations, and control applications.
- > Full software developer kit (SDK) allows for maximum flexibility through custom integration with other systems.

# StruxureWare Data Center Expert

## Features and Benefits

### Manageability

Centralized management	Simplify data center infrastructure management by using a centralized repository accessible from anywhere on the network through a powerful and easy-to-use console application.
Real-time monitoring	Immediate visibility to your entire physical infrastructure through centralized, real-time device monitoring and notification enabling quick assessment of events as they occur.
Fault notification	Real-time event notification minimizes response times to critical physical infrastructure situations. Enables IT Administrators to reduce mean time to repair, improve efficiency, and maximize uptime.
Multi-vendor device support	Extensive multi-vendor support for monitoring networked SNMP devices. Enable visibility of existing SNMP devices through threshold alert notifications, data trending and reporting.
Unified console	Customizable Windows and Linux client application enables instant access to Data Center Expert application from anywhere on the network.

### Agility

Auto-discovery	Reduces the time needed to install and deploy physical infrastructure devices by automatically detecting manageable devices on your network.
Mass configuration	Provides a comprehensive mass configuration capability, allowing users to create, save, and push configurations or specific device settings to similar APC devices with a Network Management Card.

### Availability

Graphical trending analysis	Access current and historic data for any device or group of devices. Plot and graph multiple data points in a logical correlation to visualize potential hazardous trends..
Custom reporting	Create, save and schedule user-defined reports for ease of data collection, distribution and analysis
Centralized alert repository	Access historical alerts from several appliances through one central database. Sort alerts by type, date, appliance, and/or device group.
Integrated data storage	Additional storage can easily be made available using the built-in Network Attached Storage server support for long-term storage and archiving.
Localized user interface	Provides a localized user interface including alerts and alert descriptions in 10 local languages

## Peace-of-mind software services

Schneider Electric™ offers a comprehensive portfolio of services to support and enhance our StruxureWare for Data Centers software. These services are designed to simplify deployment, reduce costs, and address your key concerns and challenges. Our software services provide you with peace of mind that your applications will receive the care they need to operate at optimal levels at all times.



### Software Installation

- Ensures that all software products are installed correctly by a highly skilled field service engineer and are quickly ready for use in your dynamic data center.

### Software Configuration

- Configures the system quickly and precisely to emulate your unique data center, in turn allowing you to make critical decisions that will save you time and money.

### Software Support Contracts

- Ensures you stay up to date with the latest software releases and technical support

### Software Enhancement

- Provides customized dashboards and enhanced reports to meet your business needs.

### Solution Deployment Management

- Provides a single point of contact to oversee the installation, configuration, integration, customization, and enhancement of the DCIM software solution.

### Software Preventive Maintenance

- Grants on-site visits to review, analyze, detect, and prevent system failures while optimizing the use of the DCIM tool.

### Software Integration

- Provides planning, designs, and project management for the integration of StruxureWare for Data Centers software into your existing software or system, providing you with a customized view into your existing applications.

### Software Education

- Offers hands-on training on key features, operational skills, and best practices, enabling you to get the most from your DCIM.

## The Schneider Electric winning recipe for service excellence

### Dedicated Resources

- Worldwide network of certified field service engineers
- Available 24/7
- Allows data center and facilities managers to focus on their day-to-day activities

### Methodology

- Our technical statements of work follow a structured methodology of work procedures that adhere to industry best practices

### Execution

- Deployment management
- Safety is a top priority
- Operation process compliance
- Scheduling

### Tools

- Latest software updates
- Latest firmware updates
- Access to DCIM support
- HW equipment

### Performance

- Fast and efficient service delivery
- Highly trained resources ensure StruxureWare for Data Centers is operating at optimal performance levels

# StruxureWare Data Center Expert

## Specifications

Specifications SKU	Basic AP9465	Standard AP9470	Enterprise AP9475	Virtual Machine	
				AP94VMTRL	AP94VMACT
Device Support (1 node = 1 IP address)	Up to 525 devices	Up to 2,025 devices	Up to 4,025 devices	Up to 5 devices	Up to 325 devices with (1) CPU and (1) GB RAM Up to 1,025 devices with (1) CPU and (2) GB RAM Up to 2,025 devices with (2) CPU and (2) GB RAM Up to 4,025 devices with (4) CPU and (4) GB RAM
NetBotz Appliance Surveillance Support	Up to 15 appliances	Up to 125 appliances	Up to 250 appliances	Up to 1 appliance	Up to 250 appliances
Supported Device Types	All: UPS Models, Chillers, Power Distribution Units (PDU), Rack PDUs, Computer Room Air Conditioners, Environmental Sensors, Power Metering Equipment, Surveillance Appliances, Static Transfer Switches, Standby Generators				
Building Management System Integration	Yes				
Multi-vendor SNMP and ModBus Support	Yes				
Power	Single supply		Dual supply	n/a	

## Client System & Web Browser Prerequisites

Operating System	Microsoft® Windows® XP (SP1, SP2, SP3) Windows® Server 2003 (SP2) Windows® Vista, Windows® 7, or Red Hat® Enterprise, Linux® 6.0 (32-bit platforms only)
CPU Speed	1 GHz or better AMD/Intel processor
System Memory	1GB RAM
Screen Resolution	1024 x 768
Browser Requirements	The browser must be JavaScript® enabled, Mozilla Firefox® version 12.0, 13.0, 14.0 Microsoft Internet Explorer® version 8.0, 9.0, 10.0 Google Chrome™ version 19.0, 20.0, 21.0

## Communications & Storage

On-board RAM	2GB	2GB	4GB	See "Supports VMware® Fault Tolerance" / "High Availability"
Data Storage	160GB available for data storage	250GB available for data storage	1TB available for data storage	18GB minimum (includes required space for VM image and 1GB of data storage)
Supports VMware® Fault Tolerance	n/a			(1) CPU, (1) GB RAM, up to 325 devices (1) CPU, (2) GB RAM, up to 1,025 devices
Supports VMware® High Availability	n/a			(1) CPU, (1) GB RAM, up to 325 devices (1) CPU, (2) GB RAM, up to 1,025 devices (2) CPU, (2) GB RAM, up to 2,025 devices (4) CPU, (4) GB RAM, up to 4,025 devices
Protocols	DNS, HTTP, HTTPS, SMS, SMTP, SSL, TCP/IP, SNMP,			DNS, HTTP, HTTPS, SMS, SMTP, SSL, TCP/IP, SNMP, Modbus TCP
Network Interface Connections	RJ-45 10/100/1000 Base-T			

## For more information...

### Additional Resources

#### Visit white papers.apc.com

Read more about the technology and research behind StruxureWare for Data Centers.

> How Data Center Infrastructure Management Software Improves Planning and Cuts Operational Costs (#107).

> Avoiding Common Pitfalls of Evaluating and Implementing DCIM Solutions (#170).

> Virtualization and Cloud Computing: Optimized Power, Cooling, and Management Maximizes Benefits (#118).

> Guidelines for Specification of Data Center Power Density (#120).

> Allocating Data Center Energy Costs and Carbon to IT Users (#161).

> Estimating a Data Center's Electrical Carbon Footprint (#66).

### View videos

Visit tv.schneider-electric.com to watch our StruxureWare for Data Centers videos and customer testimonials.

> [www.youtube.com/user/SchneiderCorporate](http://www.youtube.com/user/SchneiderCorporate)

> [tv.schneider-electric.com](http://tv.schneider-electric.com)

### Read our Blogs

Discussing challenges and trends of DCIM, and inviting you to join in.

> [Blog.schneider-electric.com/datacenter](http://Blog.schneider-electric.com/datacenter)

### Follow us on Twitter

For updates on all news on StruxureWare for Data Centers.

> [www-twitter.com/StruxureWare\\_DC](http://www-twitter.com/StruxureWare_DC)

### Need additional information?

Check out our webpages or DCIMsupport for answers to your questions.

> [www.apc.com/struxureware](http://www.apc.com/struxureware)

> [DCIMsupport.apc.com](http://DCIMsupport.apc.com)

### Want to learn more about StruxureOn?

<https://struxureon.com/>

Boston ONE Campus  
800 Federal Street  
Andover, MA 01810  
[www.schneider-electric.com](http://www.schneider-electric.com)

Life Is On

**Schneider**  
Electric