

3 MP

5 MP

Alta H5A Modular cameras

Secure areas with limited space



The Avigilon Alta H5A Modular camera is designed to help secure areas with limited space and meet discreet monitoring requirements. Configure with a Micro Bullet imager, perfect for ATMs and retail checkouts, or a Right Angle imager for installation in ceilings or false walls. The imager modules can be easily positioned to help you capture the perfect shot, whether for identification or to understand activity in the area. The Alta H5A Modular comes with Alta Aware's intelligent video analytics to help provide insight and expedite response times for critical events.



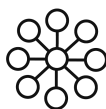
Compliant with NDAA 2019 Section 889

Features

Seamless cloud connectivity



The Alta H5A Modular camera works with the cloud-native Alta Aware VMS. View, search and share video across all your cameras and sites easily, from anywhere.



Open platform

Alta Aware VMS uses an open API architecture so you can link third-party hardware or software, like PoS systems, for improved visibility and insight. The Alta H5A Modular is also ONVIF® conformant to work with third-party systems.

Smarter, faster responses



Get alerted in real-time about key events with AI-powered analytics. Alta Aware can notify you of events with people, vehicles and anomalies to help improve security.



Fast, flexible installation

Detachable cables help reduce installation times and enable flexible positioning of the imager modules. Scan the camera QR code to quickly onboard to Aware.

Highly customizable



A modular design gives you the ability to choose between different resolutions and form factors to get the unique coverage you need for your site.



Get the perfect shot

Lightweight form factors let you install in almost any environment, including tight spaces and discreet applications, to get the visibility you need to help keep your spaces safe.

ONVIF is a trademark of Onvif, Inc.

To learn more, visit avigilon.com/h5a-modular



Specifications - Main Unit

CONTROL & PERFORMANCE		
Image Compression Method		H.264, Motion JPEG
Max Image Rate	Frame Rate (50 Hz/60 Hz)	(≤ 5 MP) 25 fps/30 fps (6 MP) 25 fps/24 fps (8 MP) 20 fps/20 fps (10 MP) 12.5 fps/15 fps
Dynamic Range		Up to 120 dB
Electronic Shutter Control		Automatic
Flicker Control		60 Hz, 50 Hz
White Balance		Automatic
Privacy Zones		Up to 64 zones

AUXILIARY	
Audio Compression Method	G.711 PCM 8 kHz, Opus
Audio Input/Output ¹	Line level input and output
External I/O Terminals ²	Alarm In, Alarm Out

¹ Not currently supported.

² Not currently supported.

NETWORK	
Network	100BASE-TX
Cabling Type	CAT5E cabling for PoE Coaxial cabling for imager modules
Connector	RJ-45 for PoE HD BNC for imager modules
ONVIF*	ONVIF compliance Profile S, Profile T, Profile G, and Profile M (www.onvif.org)
Security	Password protection, HTTPS encryption
Protocol	IPv4, HTTP, HTTPS, SOAP, DNS, NTP, RTSP, RTCP, RTP, TCP, UDP, IGMPv3, ICMP, DHCP, Zeroconf, HSTS
Streaming Protocols	WebRTC, RTP/RTSP/UDP, RTP/RTSP/TCP, RTP/RTSP/HTTP/TCP, RTP/RTSP/HTTPS/TCP

* Requires the camera to be running Avigilon Unity firmware.

MECHANICAL		
Dimensions (LxWxH)	Body Only	105 mm x 123 mm x 34 mm; (4.13" x 4.84" x 1.34")
	Including HD BNC Connector	114 mm x 123 mm x 34 mm; (4.50" x 4.84" x 1.34")



MECHANICAL	
Weight	0.517 kg (1.14 lbs)
Body	Aluminum
Housing	Stainless steel (bracket)
Finish	Black

ELECTRICAL	
Power Consumption	13 W Max
Power Source	VDC: 12 V +/-10%, 11.5 W min PoE: IEEE 802.3af Class 3 compliant
Power Connector	2-pin terminal block
RTC Battery Backup	3V manganese lithium

ENVIRONMENTAL	
Operating Temperature	-10 °C to +60 °C (14 °F to 140 °F)
Storage Temperature	-10 °C to +70 °C (14 °F to 158 °F)
Humidity	0 - 100% RH

CERTIFICATIONS	
Certifications/Directives	UL, cUL, CE, UKCA, ROHS, RCM
Safety	UL 62368-1, CSA 62368-1, IEC/EN 62368-1
Electromagnetic Emissions	FCC Part 15 Subpart B Class A, ICES-003 Class A, EN 55032 Class A, EN 61000-3-2, EN 61000-3-3
Electromagnetic Immunity	EN 55035, EN 61000-6-1
Environmental	IEC 60068-2-27, IEC 60068-2-6, IEC 60068-2-14, IEC 60068-2-1, IEC 60068-2-2
Warranty	10 year warranty



Specifications - Imager

IMAGE PERFORMANCE		3.0 MP	5.0 MP
Image Sensor		1/2.7" Progressive Scan	1/2.7" Progressive Scan
Imaging Area (H x V)		5.4 mm x 3.9 mm; 0.213 " x 0.154 "	
Max Image Rate		(50 Hz/60 Hz): 25 fps/30 fps	
Streaming Resolutions		Right Angle: 2128 x 1368, 1248 x 800, 528 x 336 Micro Bullet: 2128 x 1536	Micro Bullet: 2592 x 1944, 1920 x 1440, 1280 x 960, 640 x 480
Dynamic Range	HDR Off:	Up to 82 dB	
	HDR On:	Up to 120 dB	
3D Noise Reduction Filter		Yes	

LENS		RIGHT ANGLE	MICRO BULLET
Lens		3.7 mm fixed pinhole aperture	2.8 mm fixed
Minimum Illumination		0.1 lux	
Horizontal Angle of View (HFOV)		92 °	110 °
Vertical Angle of View (VFOV)		53 °	80 °
Max Aperture		F2.5	F2.0
Control		Fixed	

IMAGE CONTROL	
Electronic Shutter Control	Automatic
Iris Control	Fixed
Day/Night Control	Automatic
Flicker Control	60 Hz, 50 Hz
White Balance	Automatic
Privacy Zones	Up to 64 zones

CONNECTOR	
Cabling Type	Coaxial cable
Connector	HD BNC

MECHANICAL		RIGHT ANGLE	MICRO BULLET
Dimensions (LxWxH)	Imager Body Only	45 mm x 25 mm x 20 mm; 1.77 " x 0.98 " x 0.79 "	42 mm x 30 mm diameter; 1.65 " x 1.18 " diameter
	Including HD BNC	54 mm x 25 mm x 20 mm; 2.13 " x 0.98 " x 0.79 "	50 mm x 30 mm diameter; 1.97 " x 1.18 " diameter



MECHANICAL		RIGHT ANGLE	MICRO BULLET
	Connector		
Weight		0.028 kg (0.06 lbs)	0.043 kg (0.09 lbs)
Body		Aluminum	
Housing		Plastic	
Finish		Black	

ENVIRONMENTAL		RIGHT ANGLE	MICRO BULLET
Operating Temperature		-30 °C to +60 °C (-22 °F to 140 °F)	
Storage Temperature		-10 °C to +70 °C (14 °F to 158 °F)	
Humidity		0 - 100% RH	
Environmental		N/A	IP66 Rating



Analytics specifications

DETECTED ATTRIBUTES

Object Attributes	Any object
	Vehicle
	Sub-types: <ul style="list-style-type: none">• Small/Medium Vehicles (sedan, SUV, pickup truck, etc.)• Large Vehicles (bus, truck)• Two-wheeled Vehicles (bicycle, motorcycle)• Unclassified Vehicles
	Color: <ul style="list-style-type: none">• Only this color• Ignore this color License plate ¹ : <ul style="list-style-type: none">• Any plate• Exact match• Matches group• Starts with• Ends with• Includes• Exclude <groups>
	Person: <ul style="list-style-type: none">• Fall detection (Search only)• Accessories: With/Without bag, Bag Held/Dropped/Picked up (Search only)• Color: Only this color, Ignore this color, Upper body clothing color, Lower body clothing color
	Face ² : <ul style="list-style-type: none">• All faces• Select watchlists

¹ Requires additional license.

² Requires additional license. Check national and local legislation for guidance on the use of face search and face watchlists.

SUPPORTED AUDIO EVENTS

Audio Events ³	<ul style="list-style-type: none">• Glass breaking• Loud noise• Gun shot• Screaming• Smoke alarm• Car alarm• Ultrasound panic alarm• Dog bark• Tire screeching
---------------------------	--

³ Requires additional license. Also requires compatible cameras or microphones.



ANALYTIC RULES SUPPORTED

Anomaly	Rule triggered on detected anomalies based on: <ul style="list-style-type: none"> • Unusual time of day • Unusual location • Unusual velocity • Unusual sound
Appearance	Rule triggered when an object of the selected type and attributes appears in the region of interest.
Loitering	Rule triggered when an object of the selected type and attributes loiters in the selected area for the selected period of time.
Line crossing	Rule triggered when an object of the selected type and attributes crosses the line. The line can be unidirectional or bidirectional.
Counts	Rule triggered when the count of objects of the selected type either exceeds or is less than the selected threshold.
Line Crossing Count	Rule triggered when the specific number of objects of the selected type either cross a line to enter or leave an area.
License Plate Detection ⁴	Rule triggered when a license plate is detected. <ul style="list-style-type: none"> • Any plate • Exact match • Matches groups • Starts with • Ends with • Includes
Sound ⁵	Rule triggered when sounds of specified types is detected.
Access Control	When integrated with suitable access control systems, create rules for access events.

⁴ Requires additional license.

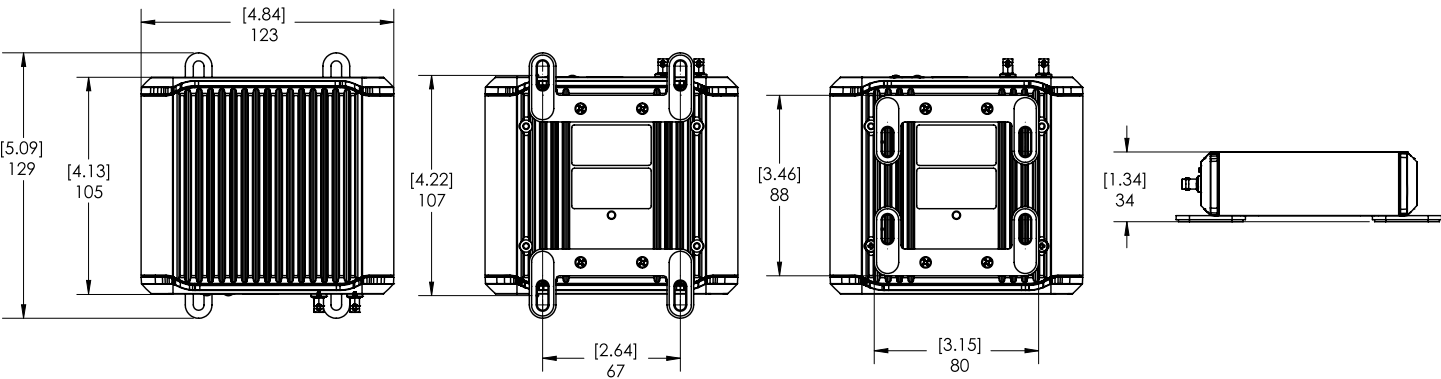
⁵ Requires additional license. Also requires compatible cameras or microphones.



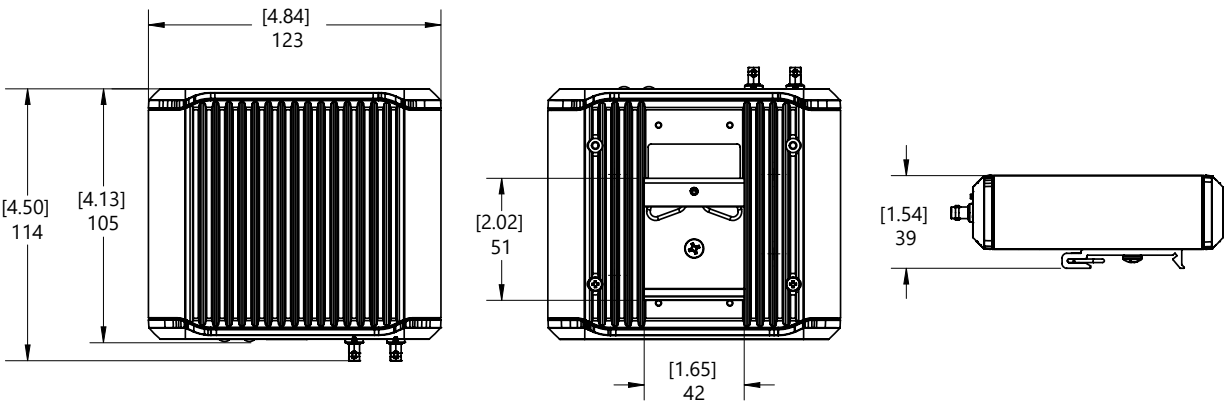
Outline Dimensions

[X.X]	INCHES
X	MM

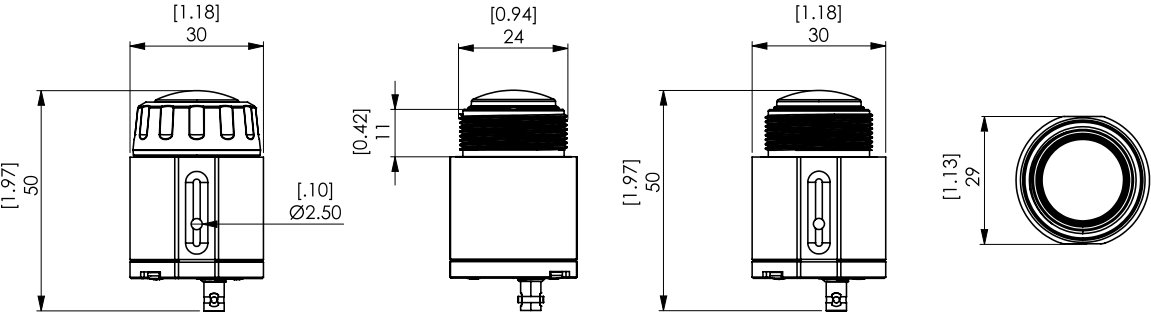
Main Unit with Bracket

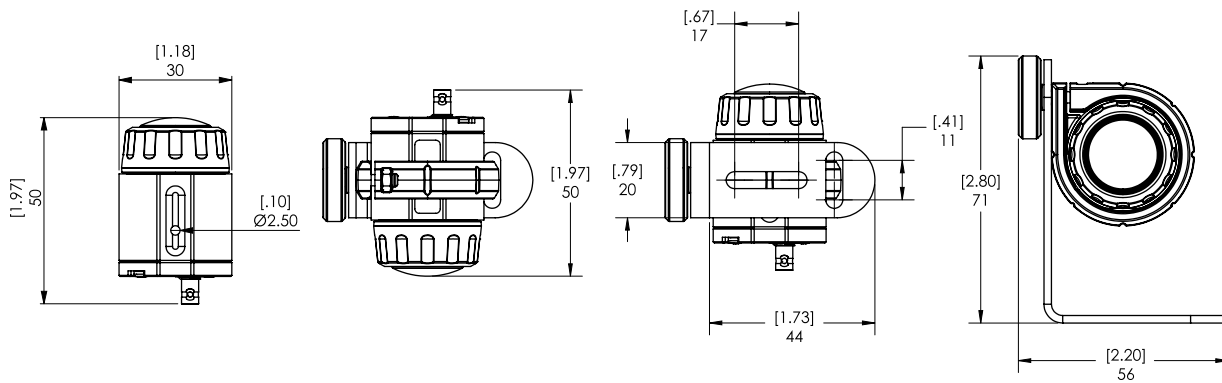


Main Unit with Din Rail Mount (Optional)

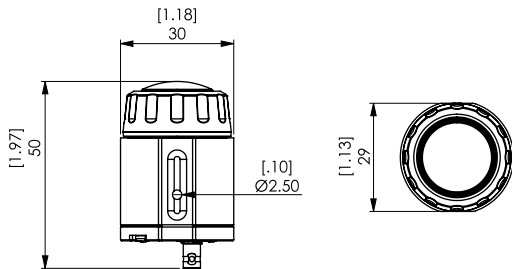


Micro Bullet Imager with Bracket

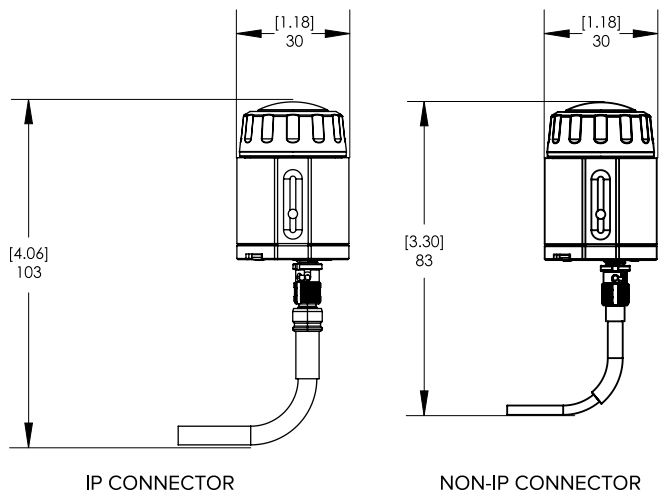




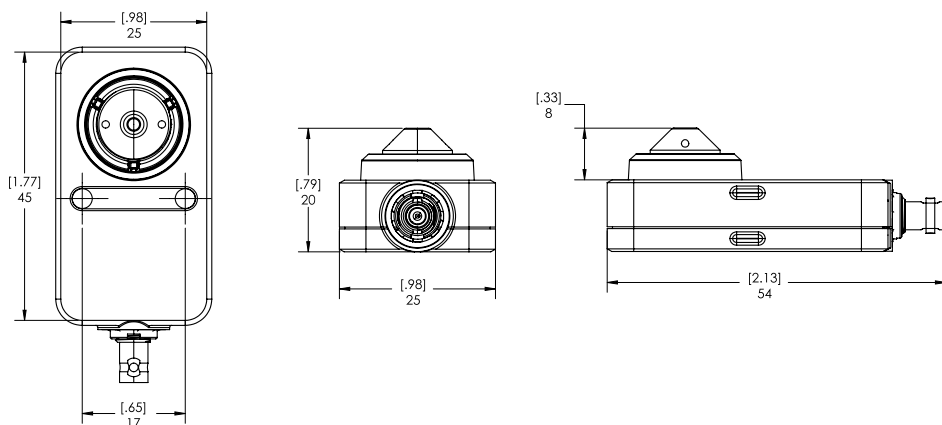
Micro Bullet Imager with Side Rail Mount

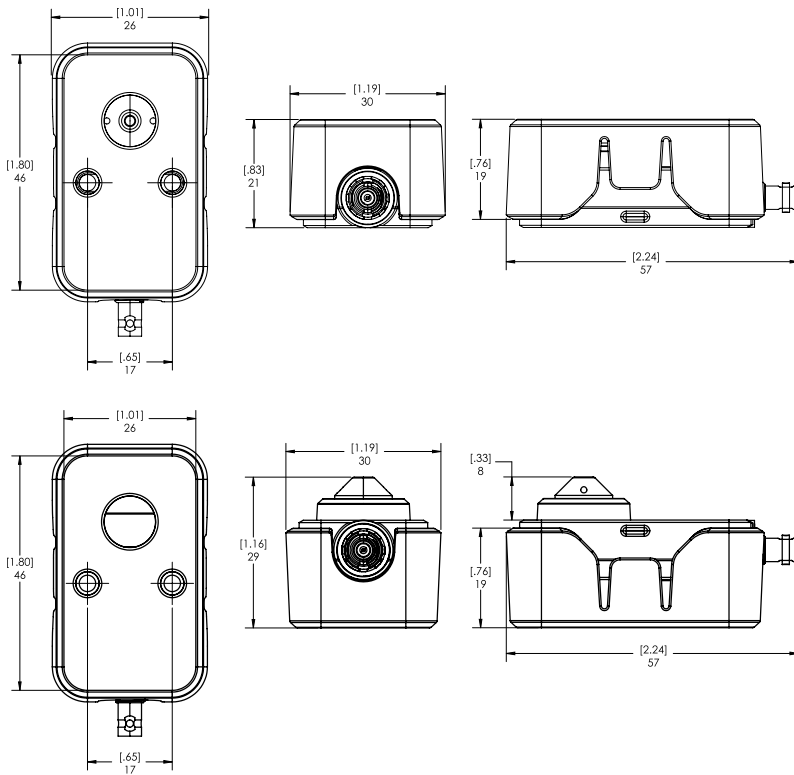


Micro Bullet Imager with Min. Cable Length

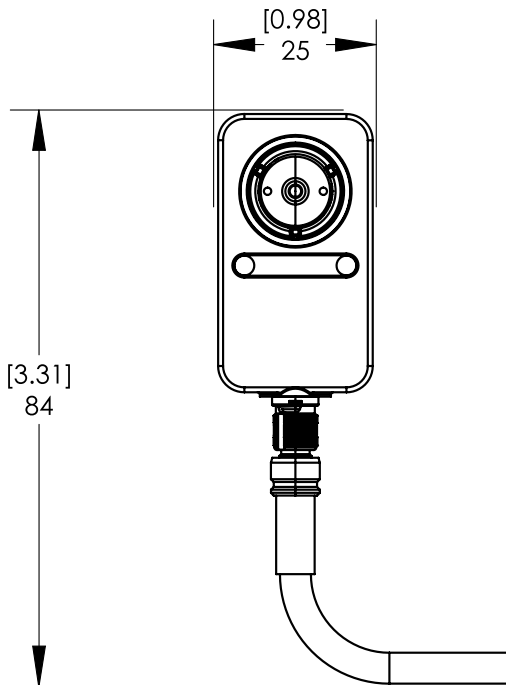


Right Angle Imager with Bracket





Right Angle Imager with Min. Cable Length



Ordering Information

The variety of mounting options for the H5A Modular provides maximum flexibility to combine different imager modules and cable configurations.

MAIN UNIT	IMAGER MODULES	REQUIRED ACCESSORIES
 <p>H5A Modular Camera Main Unit (H5A-MOD-2P-X-XX)</p>	<p>Order up to two imager modules per Main Unit, any combination of the following:</p> <div>   </div> <p>H5A Right Angle Imager (3C-H5MOD-RP4)</p> <p>H5A Micro Bullet Imager (xC-H5MOD-MB2)</p>	<p>Order one cable for each imager module:</p> <ul style="list-style-type: none"> • CBL2M-1001 (2 m) • CBL5M-1001 (5 m)

Imager Modules

With the modular design of the H5A Modular, either camera module can be connected to the H5A Modular Camera Main Unit for maximum versatility and optimal installation.

IMAGER PART #	FORM FACTOR	MP	LENS	IP66
3C-H5MOD-RP4	Right Angle	3.0	3.7 mm, Fixed Pinhole	
3C-H5MOD-MB2	Micro Bullet	3.0	2.8 mm, Fixed	✓
5C-H5MOD-MB2	Micro Bullet	5.0	2.8 mm, Fixed	✓

Camera Main Unit

BASE UNIT PART #	DESCRIPTION	DAYS OF STORAGE
H5A-MOD-2P-1-30	Modular base unit, supporting 1 lens	30
H5A-MOD-2P-2-30	Modular base unit, supporting 2 lenses	30
H5A-MOD-2P-1-60	Modular base unit, supporting 1 lens	60
H5A-MOD-2P-2-60	Modular base unit, supporting 2 lenses	60
H5A-MOD-2P-1-120	Modular base unit, supporting 1 lens	120
H5A-MOD-2P-2-120	Modular base unit, supporting 2 lenses	120
H5A-MOD-2P-1-365	Modular base unit, supporting 1 lens	365

Camera Cables

CABLE PART #	DESCRIPTION
CBL2M-1001	2m (6ft) HD BNC Cable for H5A Modular Camera Imager
CBL5M-1001	5m (16ft) HD BNC Cable for H5A Modular Camera Imager



Optional Mounting Adapters

ADAPTER PART #	DESCRIPTION
BRKTMD-1001	Din rail mount for H5A Modular Camera Main Unit
BRKTMD-1011	Replacement L Bracket for Micro Bullet Imager H5A Modular
BRKTMD-1021	Replacement Flat Bracket for Right Angle Imager H5A Modular
BRKTMD-1031	Replacement Trimring Bracket for Micro Bullet Imager H5A Modular



Support

For product support, visit: avigilon.com/support or to contact Sales, email sales@avigilon.com.

To learn more, visit: avigilon.com/h5a-modular, or to read the customer documentation, see docs.avigilon.com/bundle/alta-video/page/Products/Cameras.htm.

Jun 2025 | Rev 11



AVIGILON

Motorola Solutions, Inc. 500 West Monroe Street, Chicago, IL 60661 U.S.A. motorolasolutions.com

© 2025, Avigilon Corporation. All rights reserved. MOTOROLA, MOTO, MOTOROLA SOLUTIONS and the Stylized M Logo are trademarks or registered trademarks of Motorola Trademark Holdings, LLC and are used under license. All other trademarks are the property of their respective owners.

20250612-en