

2 MP

3 MP

5 MP

Up to 10-Year Warranty

Alta H6SL cameras

Combine versatility and high performance



Proactively boost safety and security with the analytics-enabled Avigilon H6SL camera line for Alta Aware. Available in a dome or bullet form factor, the cloud-native Alta H6SL line combines versatility and high performance for indoor and outdoor use. With high dynamic range, IR options and up to 5 MP resolution, you get crisp, clear images in even the most challenging lighting conditions. Intelligent analytics with real-time alerts help you react and respond faster to critical events and the cloud-native Alta Aware provides access to video at any time and from any location.



Compliant with NDAA 2019 Section 889

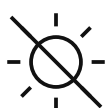
Features

React and Respond Faster with AI



Gain security preparedness and act quicker with intelligent analytics that alert you in real-time of critical events. The Alta H6SL notifies you of people, vehicles or anomalies to help you identify potential threats.

See Clearly in All Light Conditions

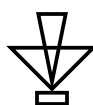


With High Dynamic Range, the Alta H6SL Dome can easily handle high-contrast scenes, and IR illumination captures details in low-light conditions so you can see clearly in all environments.

Trusted and Secure



With North American Avigilon manufacturing you can trust and security in the camera and the cloud, rest assured that your security system is protected.



Options for Every Deployment

With a variety of storage and resolution configurations and wide and telephoto lens options on the H6SL Bullet, there's a cloud-native Alta H6SL to meet all your deployment needs.

Suitable for Tough Environments



All H6SL cameras are IK10-rated for impact resistance. All outdoor models are IP66/IP67 and NEMA Type 4X rated for water, windblown dust and a degree of corrosion.

24/7 Awareness from Anywhere



Securely access video anywhere with a cloud-native platform that offers easy-to-use viewing and management via a browser or on-the-go visibility from a powerful mobile app.

To learn more, visit avigilon.com/security-cameras/h6sl-dome and avigilon.com/security-cameras/h6sl-bullet



Specifications

IMAGE PERFORMANCE		2 MP	3.0 MP	5.0 MP
Image sensor		1/2.8" progressive scan CMOS		
Imaging Area (H × V)		5.57 mm × 3.13 mm 0.219in × 0.123in	5.18 mm × 3.89 mm 0.204in × 0.153in	
Aspect Ratio		16:9	4:3	
Dynamic Range	HDR Off	83 dB		
	HDR On	126 dB	130 dB	
3D Noise Reduction Filter		Supported		
Max. frame rate		30 fps		
Streaming resolutions: Max. (H x V)		1920x1080	2048x1536	2592x1944,
Streaming resolutions: High (H x V)		1280x720, 640x360	1280x960, 640x480	1920x1440
Streaming resolutions: Medium (H x V)		1280x720, 640x360	1280x960, 640x480	1280x960
Streaming resolutions: Low (H x V)		640x360	640x480	640x480

LENS AND IR ILLUMINATION		3.4-10.5 MM (DOME/BULLET)	10.9-29 MM (BULLET ONLY)
IR Illumination Max Distance (high power 850 nm LEDs)	Dome	30 m (100 ft), full tele 20 m (65 ft), full wide	N/A
	Bullet 2.0 MP	50 m (164 ft), full tele 30 m (100 ft), full wide	N/A
	Bullet 3.0 MP / 5.0 MP	40 m (131 ft), full tele 20 m (65 ft), full wide	70 m (230 ft), full tele 30 m (100 ft), full wide
Minimum Illumination (at 33 ms shutter speed)	2.0 MP	With IR: 0 lux in monochrome mode Without IR: 0.01 lux in color mode; 0.005 lux in monochrome mode	N/A
	3.0 MP / 5.0 MP	With IR: 0 lux in monochrome mode Without IR: 0.04 lux in color mode; 0.02 lux in monochrome mode	
Horizontal Angle of View	2.0 MP	101° - 31°	N/A
	3.0 MP / 5.0 MP	95° - 28°	28° - 10°
Vertical Angle of View	2.0 MP	53° - 17°	N/A
	3.0 MP / 5.0 MP	69° - 21°	21° - 7°
Max Aperture		F1.6	F1.7
Lens Control		Remote Zoom and Focus, Autofocus, IR Cut Filter	



IMAGE CONTROL	
Image Compression Method	H.264, Motion JPEG
Electronic Shutter Control	Automatic
Day/Night Control	Automatic
Flicker Control	50 Hz, 60 Hz
Iris Control	P-Iris
White Balance	Automatic
Image Rotation	0°, 90°, 180°, 270° including Corridor Mode
Privacy Zones	Up to 64 zones



NETWORK	
Network	100BASE-TX
Cabling Type	CAT5
Network	RJ45 Connector
ONVIF ¹	ONVIF® compliance Profile S, Profile T, Profile G, and Profile M (www.onvif.org)
Security	Password protection, HTTPS encryption
Protocols	IPv6, IPv4, HTTP, HTTPS, SOAP, DNS, NTP, RTSP, RTCP, RTP, TCP, UDP, IGMP, ICMP, DHCP, ARP, HSTS
Streaming Protocols	WebRTC, RTP/RTSP/UDP, RTP/RTSP/TCP, RTP/RTSP/HTTP/TCP, RTP/RTSP/HTTPS/TCP
Platform Compatibility	Avigilon Alta Aware, Avigilon Unity ACC ¹ , 3rd party VMS ¹

¹Requires the camera to be running Avigilon Unity firmware.

AUXILIARY I/O	
Audio Compression Method	G.711 PCM 8 kHz, Opus
Audio Input/Output ¹	Line level I/O
External I/O Terminals ²	Alarm In, Alarm Out
Microphone (Indoor Dome)	Optional Microphone accessory sold separately for Indoor Dome Camera only

¹Audio output is not currently supported.

²Not currently supported.

MECHANICAL (DOME)	SURFACE MOUNT	IN-CEILING MOUNT	PENDANT MOUNT
Dimensions	D 156 mm × H 116 mm; D 6.1" × H 4.6"	D 174 mm × H 165 mm; D 6.9" × H 6.5"	D 156 mm × H 161 mm; D 6.2" × H 6.3"
Weight	0.81 kg	0.80 kg	1.07 kg
Max. Ceiling Thickness	N/A	25 mm (1.0")	N/A
Dome Bubble	Polycarbonate		
Body	Polycarbonate		
Housing	Polycarbonate		
Finish	Plastic, injection molded, Pantone 427C		
Adjustment Range	360° pan, 30°–95° tilt (recommended), 8°–95° tilt (maximum), ±180° azimuth		

MECHANICAL (BULLET)		3.4-10.5 MM AND 10.9-29 MM
Dimensions (L x W x H)	Camera with junction box	296 mm × 126 mm × 106 mm; 11.7" × 5.0" × 4.2"
Weight		1.31 kg (1.78 kg with junction box)
Body		Aluminum
Housing		Aluminum
Finish		Powder coat, close to Pantone 427C
Adjustment Range		±175° pan, ±90° tilt, ±175° azimuth



ELECTRICAL			
Power Source		PoE: IEEE 802.3af Class 3 compliant, 12VDC Aux (Available on Bullet only)	
IR Illuminator Behaviour	Dome	IR illuminator will turn off if the temperature is 60°C (140°F) or higher. The illuminator will operate at 50% power if the temperature is between 40°C (104°F) and 52 °C (117°F). Hysteresis: 2°C (3.6°F).	
	Bullet	IR illuminator will turn off if the temperature is 60°C (140°F) or higher.	
RTC Battery Backup		3V manganese lithium	
PoE	Dome	10 W max (8 W with no IR or IR disabled)	
	Bullet	13 W max	
Memory		1GB RAM, 512MB Flash	
ENVIRONMENTAL	INDOOR DOME	OUTDOOR DOME	BULLET
Operating Temperature	-10°C to +60°C (14°F to 140°F)	-40°C to +60°C (-40°F to 140°F)	-40°C to +60°C (-40°F to 140°F)
Storage Temperature	-10°C to +70°C (14°F to 158°F)		
Absolute Maximum Temperature	74°C (165°F) per NEMA TS2 (Temp.) para 2.2.7.2 - 2.2.7.7		
Humidity	0 - 95% non-condensing		
CERTIFICATIONS	INDOOR DOME	OUTDOOR DOME	BULLET
Certifications/Approvals	UL, cUL, CE, UKCA, ROHS, RCM, NOM, KC, BIS		
Safety	UL/CSA/EN/IEC 62368-1, IEC 62471		
Environmental	IEC/EN 62262 Impact (IK 10), IEC 60529 IP52 rating	IEC/EN 62262 (IK 10), IEC 60529 IP66, IP67 rating, Type 4X, IEC 60068-2-1, IEC 60068-2-2, IEC 60068-2-6, IEC 60068-2-14, IEC 60068-2-27	IEC/EN 62262 (IK 10), IEC 60529 IP66, IP67 rating, Type 4X, IEC 60068-2-1, IEC 60068-2-2, IEC 60068-2-6, IEC 60068-2-14, IEC 60068-2-27
Electromagnetic Emissions	FCC Part 15 Subpart B (Class B), IC ICES-003 (Class B), EN 55032 (Class B), EN 61000-6-3, EN 61000-3-2, EN 61000-3-3		
Electromagnetic Immunity	EN 55035, EN 61000-6-1, EN 50130-4, EN 50121-4		
Warranty	Up to 10-year warranty with Active Aware License.		



Analytics specifications

DETECTED ATTRIBUTES

Object Attributes	Any object
	Vehicle
	Sub-types: <ul style="list-style-type: none">• Small/Medium Vehicles (sedan, SUV, pickup truck, etc.)• Large Vehicles (bus, truck)• Two-wheeled Vehicles (bicycle, motorcycle)• Unclassified Vehicles
	Color: <ul style="list-style-type: none">• Only this color• Ignore this color License plate ¹ : <ul style="list-style-type: none">• Any plate• Exact match• Matches group• Starts with• Ends with• Includes• Exclude <groups>
	Person: <ul style="list-style-type: none">• Fall detection (Search only)• Accessories: With/Without bag, Bag Held/Dropped/Picked up (Search only)• Color: Only this color, Ignore this color, Upper body clothing color, Lower body clothing color
	Face ² : <ul style="list-style-type: none">• All faces• Select watchlists

¹ Requires additional license.

² Requires additional license. Check national and local legislation for guidance on the use of face search and face watchlists.

SUPPORTED AUDIO EVENTS

Audio Events ³	<ul style="list-style-type: none">• Glass breaking• Loud noise• Gun shot• Screaming• Smoke alarm• Car alarm• Ultrasound panic alarm• Dog bark• Tire screeching
---------------------------	--

³ Requires additional license. Also requires compatible cameras or microphones.



ANALYTIC RULES SUPPORTED

Anomaly	<p>Rule triggered on detected anomalies based on:</p> <ul style="list-style-type: none"> • Unusual time of day • Unusual location • Unusual velocity • Unusual sound
Appearance	Rule triggered when an object of the selected type and attributes appears in the region of interest.
Loitering	Rule triggered when an object of the selected type and attributes loiters in the selected area for the selected period of time.
Line crossing	Rule triggered when an object of the selected type and attributes crosses the line. The line can be unidirectional or bidirectional.
Counts	Rule triggered when the count of objects of the selected type either exceeds or is less than the selected threshold.
Line Crossing Count	Rule triggered when the specific number of objects of the selected type either cross a line to enter or leave an area.
License Plate Detection ⁴	<p>Rule triggered when a license plate is detected.</p> <ul style="list-style-type: none"> • Any plate • Exact match • Matches groups • Starts with • Ends with • Includes
Sound ⁵	Rule triggered when sounds of specified types is detected.
Access Control	When integrated with suitable access control systems, create rules for access events.

⁴ Requires additional license.

⁵ Requires additional license. Also requires compatible cameras or microphones.

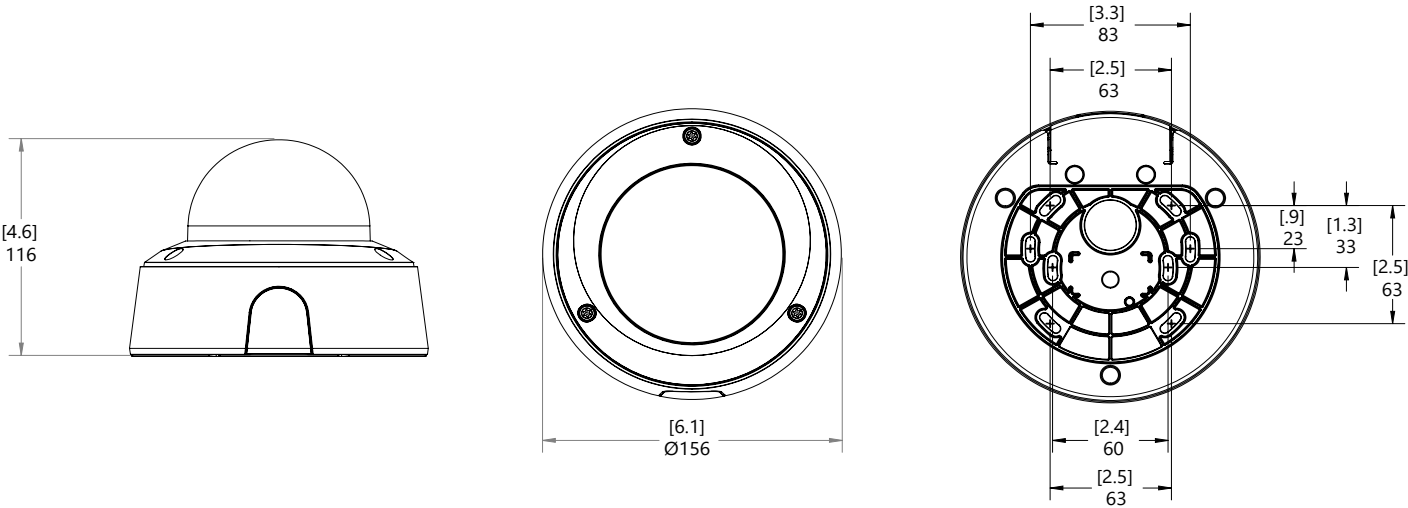


Outline Dimensions

[X.X]	INCHES
X	MM

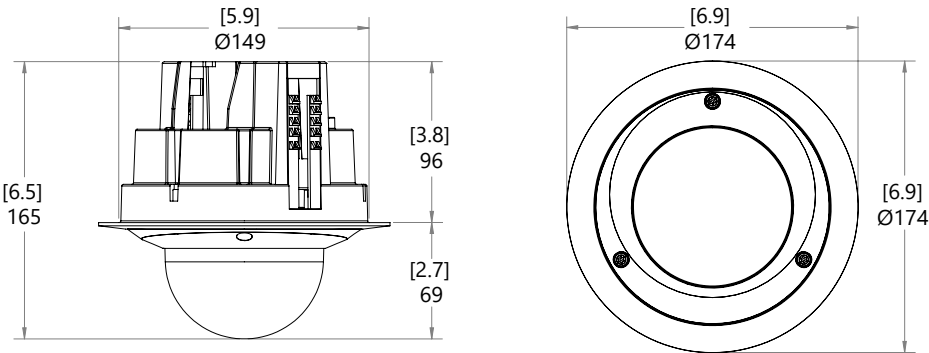
Dome Camera with Surface Mount

(H6SL Dome Camera + Provided Surface Mount)



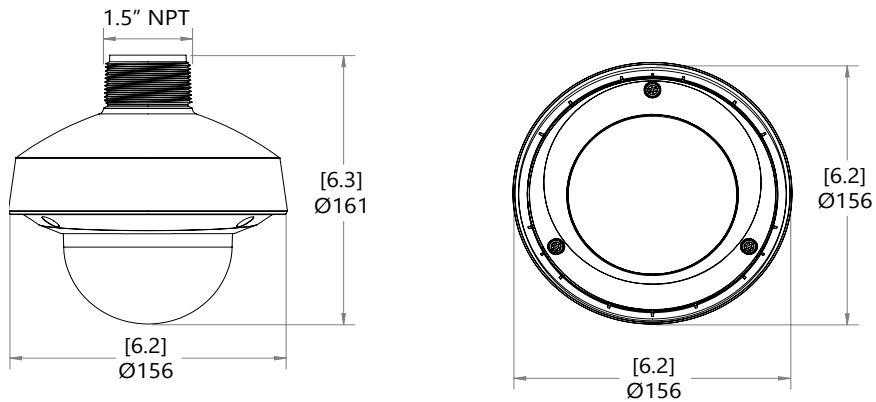
Dome Camera with In-ceiling Mount

(H6SL Dome Camera + SLSPCIL-1001)



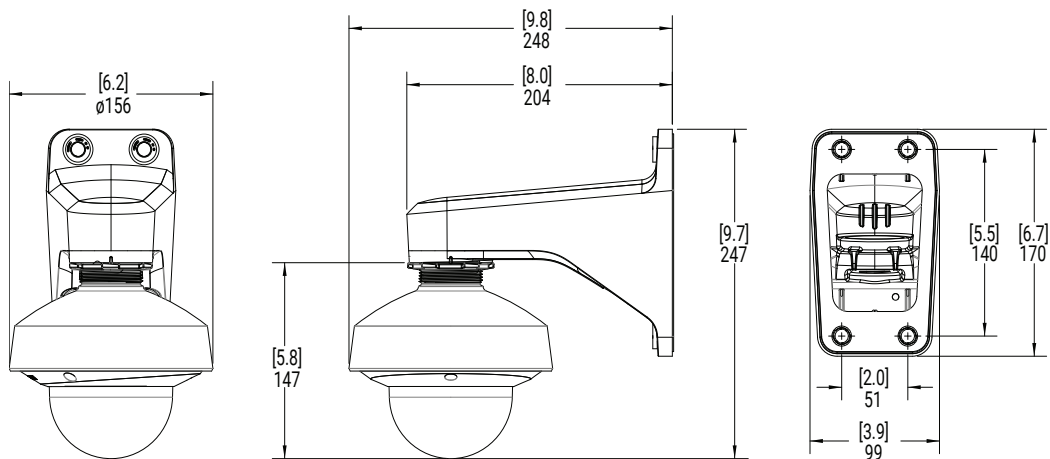
Dome Camera with NPT Adapter

(H6SL Dome Camera + H6SL-MT-NPTA1)

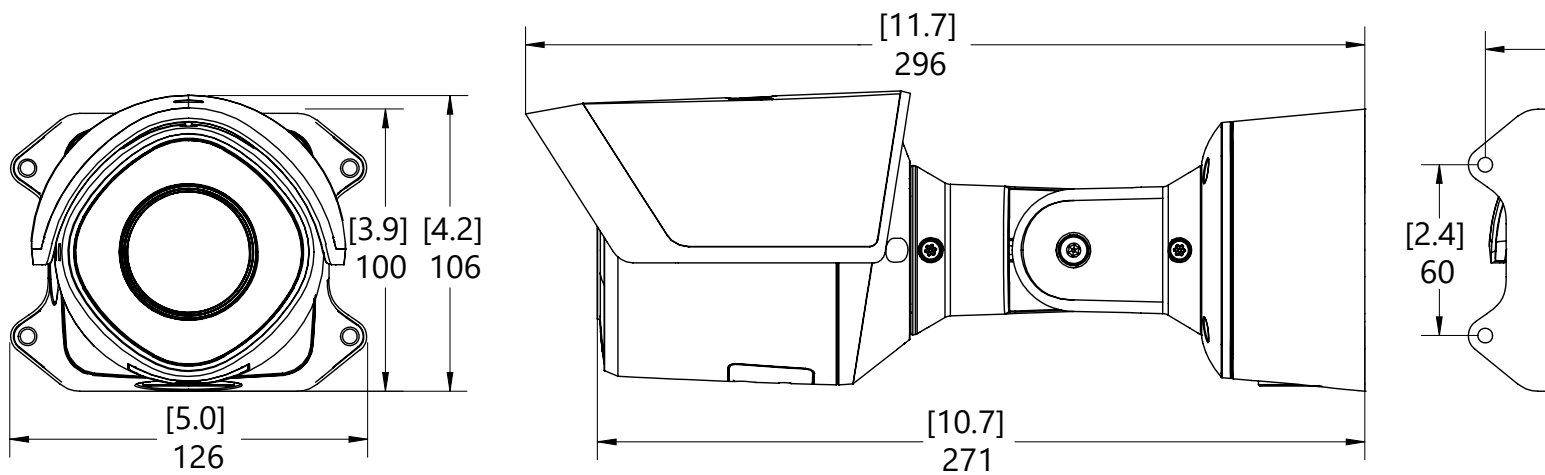


Dome Camera with NPT Adapter and Pendant Wall Mount

(H6SL Dome Camera + H6SL-MT-NPTA1 + WLMT-1021)

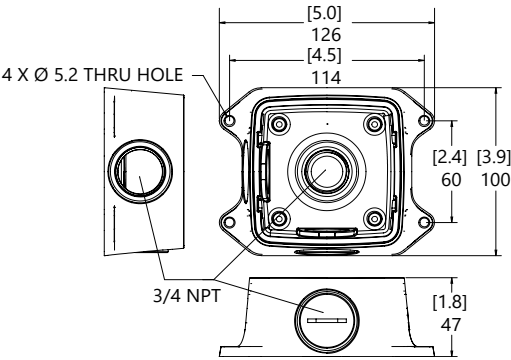


Bullet Camera



Bullet Junction Box

(Provided With Camera)



Ordering Information

Dome Camera

MODEL NUMBER	MP	LENS	IR	IP66/IP67, TYPE4X	DAYS OF STORAGE
2.0C-H6SL-D1-30	2.0	3.4-10.5 mm			30 Days
2.0C-H6SL-D1-60	2.0	3.4-10.5 mm			60 Days
2.0C-H6SL-D1-120	2.0	3.4-10.5 mm			120 Days
2.0C-H6SL-D1-365	2.0	3.4-10.5 mm			365 Days
2.0C-H6SL-D1-IR-30	2.0	3.4-10.5 mm	✓		30 Days
2.0C-H6SL-D1-IR-60	2.0	3.4-10.5 mm	✓		60 Days
2.0C-H6SL-D1-IR-120	2.0	3.4-10.5 mm	✓		120 Days
2.0C-H6SL-D1-IR-365	2.0	3.4-10.5 mm	✓		365 Days
2.0C-H6SL-DO1-IR-30	2.0	3.4-10.5 mm	✓	✓	30 Days
2.0C-H6SL-DO1-IR-60	2.0	3.4-10.5 mm	✓	✓	60 Days
2.0C-H6SL-DO1-IR-120	2.0	3.4-10.5 mm	✓	✓	120 Days
2.0C-H6SL-DO1-IR-365	2.0	3.4-10.5 mm	✓	✓	365 Days
3.0C-H6SL-D1-30	3.0	3.4-10.5 mm			30 Days
3.0C-H6SL-D1-60	3.0	3.4-10.5 mm			60 Days
3.0C-H6SL-D1-120	3.0	3.4-10.5 mm			120 Days
3.0C-H6SL-D1-IR-30	3.0	3.4-10.5 mm	✓		30 Days
3.0C-H6SL-D1-IR-60	3.0	3.4-10.5 mm	✓		60 Days
3.0C-H6SL-D1-IR-120	3.0	3.4-10.5 mm	✓		120 Days
3.0C-H6SL-DO1-IR-30	3.0	3.4-10.5 mm	✓	✓	30 Days
3.0C-H6SL-DO1-IR-60	3.0	3.4-10.5 mm	✓	✓	60 Days
3.0C-H6SL-DO1-IR-120	3.0	3.4-10.5 mm	✓	✓	120 Days
5.0C-H6SL-D1-30	5.0	3.4-10.5 mm			30 Days
5.0C-H6SL-D1-60	5.0	3.4-10.5 mm			60 Days
5.0C-H6SL-D1-120	5.0	3.4-10.5 mm			120 Days
5.0C-H6SL-D1-IR-30	5.0	3.4-10.5 mm	✓		30 Days
5.0C-H6SL-D1-IR-60	5.0	3.4-10.5 mm	✓		60 Days
5.0C-H6SL-D1-IR-120	5.0	3.4-10.5 mm	✓		120 Days
5.0C-H6SL-DO1-IR-30	5.0	3.4-10.5 mm	✓	✓	30 Days
5.0C-H6SL-DO1-IR-60	5.0	3.4-10.5 mm	✓	✓	60 Days
5.0C-H6SL-DO1-IR-120	5.0	3.4-10.5 mm	✓	✓	120 Days



Bullet Camera

MODEL NUMBER	MP	LENS	IR	IP66/IP67, TYPE4X	DAYS OF STORAGE
2.0C-H6SL-BO1-IR-30	2.0	3.4-10.5 mm	✓	✓	30 Days
2.0C-H6SL-BO1-IR-60	2.0	3.4-10.5 mm	✓	✓	60 Days
2.0C-H6SL-BO1-IR-120	2.0	3.4-10.5 mm	✓	✓	120 Days
2.0C-H6SL-BO1-IR-365	2.0	3.4-10.5 mm	✓	✓	365 Days
3.0C-H6SL-BO1-IR-30	3.0	3.4-10.5 mm	✓	✓	30 Days
3.0C-H6SL-BO1-IR-60	3.0	3.4-10.5 mm	✓	✓	60 Days
3.0C-H6SL-BO1-IR-120	3.0	3.4-10.5 mm	✓	✓	120 Days
3.0C-H6SL-BO2-IR-30	3.0	10.9-29 mm	✓	✓	30 Days
3.0C-H6SL-BO2-IR-60	3.0	10.9-29 mm	✓	✓	60 Days
3.0C-H6SL-BO2-IR-120	3.0	10.9-29 mm	✓	✓	120 Days
5.0C-H6SL-BO1-IR-30	5.0	3.4-10.5 mm	✓	✓	30 Days
5.0C-H6SL-BO1-IR-60	5.0	3.4-10.5 mm	✓	✓	60 Days
5.0C-H6SL-BO1-IR-120	5.0	3.4-10.5 mm	✓	✓	120 Days
5.0C-H6SL-BO2-IR-30	5.0	10.9-29 mm	✓	✓	30 Days
5.0C-H6SL-BO2-IR-60	5.0	10.9-29 mm	✓	✓	60 Days
5.0C-H6SL-BO2-IR-120	5.0	10.9-29 mm	✓	✓	120 Days

Accessories

PART NUMBER	DESCRIPTION
WLMT-1021	Wall Mount Arm for 1.5" NPT Pendant
PLMT-1001	Pole Mount Adapter for WLMT-1021 and H6SL Bullet Camera
CRNMT-1001	Corner Mount for WLMT-1021 and H6SL Bullet Camera
SLSPCIL-1001	In-ceiling mounting adapter for H6SL Dome Camera
H6SL-MT-NPTA1	Pendant NPT adapter for H6SL Dome Camera
DCLPNL-1001	Metal ceiling panel for suspended ceiling installations
H6SL-DO-SHLD1	Weathershield for H6SL Dome Camera
ACMICR-1001	Microphone accessory for Indoor H6SL Dome Camera
H6SL-DD-CLER1	Clear lower dome for H6SL Outdoor Dome Camera
H6SL-DD-SMOK1	Smoked lower dome for H6SL Outdoor Dome Camera
H6SL-DI-CLER1	Clear lower dome for H6SL Indoor Dome Camera
H6SL-DI-SMOK1	Smoked lower dome for H6SL Indoor Dome Camera
CNCVR-1001	Adapter 3/4 inch conduit for H6SL Dome Camera, 5-pack



Support

For product support, visit: avigilon.com/support or to contact Sales, email sales@avigilon.com.

To learn more, visit: avigilon.com/security-cameras/h6sl-dome, or to read the customer documentation, see docs.avigilon.com/bundle/alta-video/page/Products/Cameras.htm.

To learn more, visit: avigilon.com/security-cameras/h6sl-bullet, or to read the customer documentation, see docs.avigilon.com/bundle/alta-video/page/Products/Cameras.htm.

Jun 2025 | Rev 5



AVIGILON

Motorola Solutions, Inc. 500 West Monroe Street, Chicago, IL 60661 U.S.A. motorolasolutions.com

© 2025, Avigilon Corporation. All rights reserved. MOTOROLA, MOTO, MOTOROLA SOLUTIONS and the Stylized M Logo are trademarks or registered trademarks of Motorola Trademark Holdings, LLC and are used under license. All other trademarks are the property of their respective owners.

20250612-en