

[Datasheet](#)[Alta Video](#)[PTZ Camera](#)

# Alta H6A PTZ cameras

Pan, tilt and zoom in the cloud



Introducing the Avigilon Alta H6A PTZ camera — a cloud-native solution for real-time security. With 360-degree views and up to 30x zoom, effortlessly monitor large areas indoors or outdoors. From parking lots to shopping malls, capture every detail without missing a beat.



Compliant with NDAA 2019 Section 889

## Strengthen monitoring capabilities



Tackle more use cases and improve the protection of large areas by integrating the H6A PTZ into your existing fixed cameras set-up for unparalleled situational awareness.

## Increase coverage with less



A single H6A PTZ can monitor multiple angles and areas, allowing you to reduce the number of cameras needed and lowering your total cost of ownership.

## Deploy where you need it



For indoor applications, leverage the in-ceiling mount for a more discreet solution. For outdoors, deploy the weather and vandal-proof pendant mount for optimal durability.



## Capture every detail in real-time

Get a close-up look at evidentiary detail with up to 30x zoom. When incidents arise, swiftly direct the H6A PTZ to where you need it to manually track and capture critical events.

## Stay ahead with AI-powered video



Take action before an incident escalates with AI-powered video analytics to proactively alert you of potentially critical events.

## Trust that your data is secured



Avigilon Alta video security solutions are built on a trusted, cybersecure platform that protects your data end-to-end from the camera to the cloud.

To learn more, visit [avigilon.com/h6a-ptz](https://avigilon.com/h6a-ptz)



# Specifications

IMAGE PERFORMANCE	2 MP	4 MP
Image sensor	1/1.8" progressive scan CMOS	
Active pixels (H x V)	1920 (H) × 1080 (V)	2560 (H) × 1440 (V)
Aspect ratio	16:9	
Dynamic range	80 dB	
Dynamic range (HDR On, Measured according to IEC 62676 Part 5)	Up to 122 dB (dual exposure, 30 fps)	
Max. frame rate	(50 Hz/60 Hz): 25fps/30 fps	
Streaming resolutions: Max. (H x V)	1920 x 1080	2560 x 1440
Streaming resolutions: High (H x V)	1280 x 720	1920 x 1080
Streaming resolutions: Medium (H x V)	848 x 480	1280 x 720
Streaming resolutions: Low (H x V)	640 x 360	640 x 360
Bandwidth management	HDSM SmartCodec technology; Idle scene mode	

LENS		
Lens	6.5 mm to 162.5 mm, F/1.6 – F/4.8	
Angle of view, Wide (H x V)	58.1 x 34.8	
Angle of view, Tele (H x V)	58.1 x 34.8	
Zoom	30x Enhanced Optical	
Dynamic range (HDR On, Measured According to IEC 62676 Part 5)	Remote Zoom and Focus, Autofocus, Auto Iris	



## IMAGE CONTROL

Image compression method	H.264
Streaming	Multi-stream H.264
Electronic shutter control	Automatic
Day/Night control	Automatic, Manual
Flicker control	On/Off
Iris control	Automatic
White balance	Automatic
Backlight compensation	On/Off
Privacy zones	Up to 64 Zone
Digital Zoom	12x
Electronic Image Stabilization	Yes
Digital Defog	Yes
P/T Presets	300 configurable
P/T Tours	100 configurable
3D Noise Reduction Filter	Yes

## NETWORK

Network	100BASE-TX, 1000BASE-T with Auto MDI/MDI-X speed
Cabling Type	CAT5e minimum
Connector	RJ-45
ONVIF <sup>1</sup>	ONVIF compliance, Profile S, Profile T, Profile G, and Profile M ( <a href="http://www.onvif.org">www.onvif.org</a> )
Security	Password protection, HTTPS encryption
Protocol	IPv6, IPv4, HTTP, HTTPS, SOAP, DNS, NTP, RTSP, RTCP, RTP, TCP, UDP, IGMP, ICMP, DHCP, ARP, HSTS
Streaming Protocols	WebRTC, RTP/RTSP/UDP, RTP/RTSP/TCP, RTP/RTSP/HTTP/TCP, RTP/RTSP/HTTPS/TCP
Device Management Protocol	SNMP v2c, SNMP v3
Secure Boot	Yes
Platform Compatibility	Avigilon Alta Video, Avigilon Unity ACC <sup>1</sup> , 3rd party VMS <sup>1</sup>

<sup>1</sup> Requires the camera to be running Avigilon Unity firmware.

## PERIPHERALS

Onboard storage	2 × microSD/microSDHC/microSDXC slots – microSD cards to match the purchased data retention included.
-----------------	---



AUXILIARY I/O	
Audio Input/Output <sup>1</sup>	Full Duplex Line level input and output
Audio Compression Method	G.711 PCM 8 kHz, Opus
External I/O Terminals <sup>2</sup>	3x Alarm In (3.5VDC/3.5mA MAX), 1x NO Relay Out (32VDC/150mA MAX), 1x Digital Out (13VDC/140mA MAX), 1 x 12VDC source (11~13VDC/140 mA MAX)

<sup>1</sup> Audio output is not currently supported.

<sup>2</sup> Not currently supported.

MECHANICAL	IN-CEILING MOUNT	PENDANT MOUNT
Dimensions (LxWxH), Camera Only (In Shipping Box)	263 mm × 225 mm x 225 mm (280 mm x 267 mm x 551 mm); 10.4 in × 8.8 in x 8.8 in (11 in x 10.5 in x 21.7 in)	302 mm × 242 mm x 242 mm (280 mm x 267 mm x 551 mm); 11.9 in × 9.5 in x 9.5 in (11 in x 10.5 in x 21.7 in)
Weight Camera Only (In Shipping Box)	3.45 kg (4.90 kg); 7.60 lb. (10.78 lb.)	4.15 kg (5.60 kg); 9.13 lb. (12.31 lb.)
Maximum Ceiling Thickness	1.75" (44.5 mm)	N/A
Dome Bubble	Polycarbonate	
Body	Polycarbonate and aluminum	
Housing	Recessed mount	Pendant mount
Finish	Plastic injection mold close to RAL9002 and Black; Powdercoat Gray, AKZO Nobel JP301H; Sand Grain Texture with Satin Sheen	
Pan Range	360° continuous	
Tilt Range	95°	
Pan Speed	0.05-500°/sec w/IEEE 802.3at Type 2, Class 4 0.05-750°/sec w/IEEE 802.3bt Type 3, Class 6 0.05-900°/sec w/IEEE 802.3bt Type 4, Class 8	
Tilt Speed	0.05-160°/sec w/IEEE 802.3at Type 2, Class 4 0.05-250°/sec w/IEEE 802.3bt Type 3, Class 6 0.05-300°/sec w/IEEE 802.3bt Type 4, Class 8	
Preset Accuracy	0.1°	



ELECTRICAL	IN-CEILING MOUNT	PENDANT MOUNT
Power Source, PoE	IEEE 802.3 at Type 2, Class 4 compliant	IEEE 802.3at Type 2, Class 4 compliant* IEEE802.3bt Type 3, Class 6 compliant* IEEE802.3bt Type 4, Class 8 compliant*
PoE Power Consumption	25W Maximum	70W Maximum
Electrical	In-Ceiling Mount	Pendant Mount
Power Source, Aux	Aux 24 VDC/VAC +/- 10%	
AUX Power Consumption	35W (DC source), 55VA (AC source) Maximum	70W (DC source), 85VA (AC source) Maximum
RTC Backup Battery	3V manganese lithium	
>Auxillary Power Connector	2-Pin Screw terminal removable plug	
Memory	4GB, RAM, 4GB Flash	
Redundant Power	Seamless failover between PoE and Aux and back without interrupt in camera operation	

\* Using anything less than a Type 4, Class 8 PSE will result in reduced environmental and pan/tilt speed specifications.

ENVIRONMENTAL	IN-CEILING MOUNT	PENDANT MOUNT
Operating Temperature	-10 °C to +50 °C (14 °F to 122 °F)	-10 °C to +60 °C (14 °F to 140 °F), w/ IEEE 802.3at Type 2, Class 4 -40 °C to +60 °C (-40 °F to 140 °F), w/ IEEE802.3bt Type 3, Class 6 -51 °C to +60 °C (-59.8 °F to 140 °F), w/ IEEE802.3bt Type 4, Class 8
Boot Temperature*	-10 °C to +50 °C (14 °F to 122 °F)	-10 °C to +60 °C (14 °F to 140 °F), w/ IEEE 802.3at Type 2, Class 4 -25 °C to +60 °C (-13 °F to 140 °F), w/ IEEE802.3bt Type 3, Class 6 -40 °C to +60 °C (-40 °F to 140 °F), w/ IEEE802.3bt Type 4, Class 8
Absolute Maximum Temperature	74 °C (165 °F) per NEMA TS2 (Temp.) para 2.2.7.2 - 2.2.7.7	
Storage Temperature	-10 °C to +70 °C (14 °F to 158 °F)	
Operating Humidity	10 - 90% non-condensing	10 - 100%

\* Connection/Streaming expected within 5 minutes, Full Operation expected within 60 minutes.



CERTIFICATIONS	IN-CEILING MOUNT	PENDANT MOUNT
Certifications/Approvals	UL, cUL, CE, ROHS, RCM, UKCA, NOM, KC, BIS	
Safety Standards	UL 62368-1, CSA 62368-1, IEC/EN 62368-1	
	UL 2043 (Plenum)	N/A
Electromagnetic Emissions Standards	FCC Part 15 Subpart B (Class A) ICES-003 (Class A) EN 55032 (Class A) EN IEC 61000-6-8 (Class A) EN 61000-3-2 EN 61000-3-3	
Electromagnetic Immunity Standards	EN 55035 EN 61000-6-1 EN 61000-6-2 EN 50121-4 EN 50130-4	
NEMA TS2	N/A	NEMA TS2 paragraph 2.2.7-2.2.9
Warranty	Limited 5 Year Warranty	



# Analytics specifications

## DETECTED ATTRIBUTES

Object Attributes	Any object
	Vehicle
	Sub-types: <ul style="list-style-type: none"><li>• Small/Medium Vehicles (sedan, SUV, pickup truck, etc.)</li><li>• Large Vehicles (bus, truck)</li><li>• Two-wheeled Vehicles (bicycle, motorcycle)</li><li>• Unclassified Vehicles</li></ul>
	Color: <ul style="list-style-type: none"><li>• Only this color</li><li>• Ignore this color</li></ul> License plate <sup>1</sup> : <ul style="list-style-type: none"><li>• Any plate</li><li>• Exact match</li><li>• Matches group</li><li>• Starts with</li><li>• Ends with</li><li>• Includes</li><li>• Exclude &lt;groups&gt;</li></ul>
	Person: <ul style="list-style-type: none"><li>• Fall detection (Search only)</li><li>• Accessories: With/Without bag, Bag Held/Dropped/Picked up (Search only)</li><li>• Color: Only this color, Ignore this color, Upper body clothing color, Lower body clothing color</li></ul>
	Face <sup>2</sup> : <ul style="list-style-type: none"><li>• All faces</li><li>• Select watchlists</li></ul>

<sup>1</sup> Requires additional license.

<sup>2</sup> Requires additional license. Check national and local legislation for guidance on the use of face search and face watchlists.

## SUPPORTED AUDIO EVENTS

Audio Events <sup>3</sup>	<ul style="list-style-type: none"><li>• Glass breaking</li><li>• Loud noise</li><li>• Gun shot</li><li>• Screaming</li><li>• Smoke alarm</li><li>• Car alarm</li><li>• Ultrasound panic alarm</li><li>• Dog bark</li><li>• Tire screeching</li></ul>
---------------------------	--

<sup>3</sup> Requires additional license. Also requires compatible cameras or microphones.



## ANALYTIC RULES SUPPORTED

Anomaly	Rule triggered on detected anomalies based on: <ul style="list-style-type: none"> <li>• Unusual time of day</li> <li>• Unusual location</li> <li>• Unusual velocity</li> <li>• Unusual sound</li> </ul>
Appearance	Rule triggered when an object of the selected type and attributes appears in the region of interest.
Loitering	Rule triggered when an object of the selected type and attributes loiters in the selected area for the selected period of time.
Line crossing	Rule triggered when an object of the selected type and attributes crosses the line. The line can be unidirectional or bidirectional.
Counts	Rule triggered when the count of objects of the selected type either exceeds or is less than the selected threshold.
Line Crossing Count	Rule triggered when the specific number of objects of the selected type either cross a line to enter or leave an area.
License Plate Detection <sup>4</sup>	Rule triggered when a license plate is detected. <ul style="list-style-type: none"> <li>• Any plate</li> <li>• Exact match</li> <li>• Matches groups</li> <li>• Starts with</li> <li>• Ends with</li> <li>• Includes</li> </ul>
Sound <sup>5</sup>	Rule triggered when sounds of specified types is detected.
Access Control	When integrated with suitable access control systems, create rules for access events.

<sup>4</sup> Requires additional license.

<sup>5</sup> Requires additional license. Also requires compatible cameras or microphones.

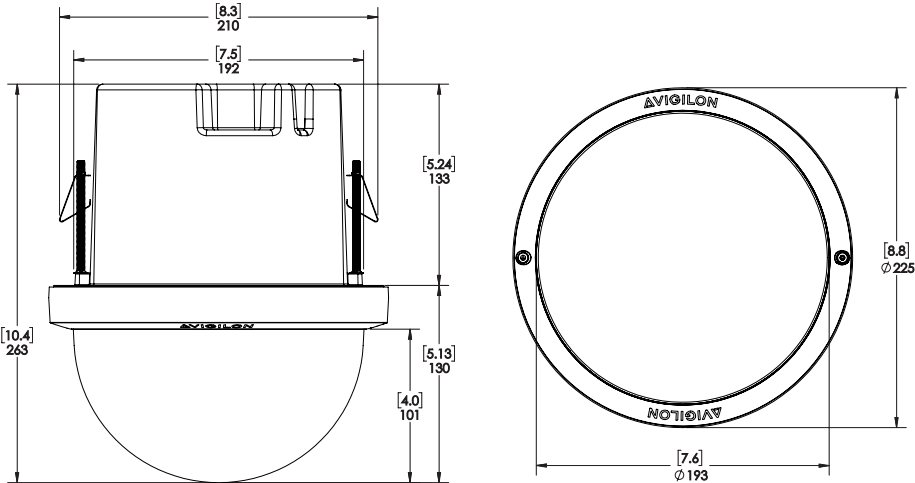




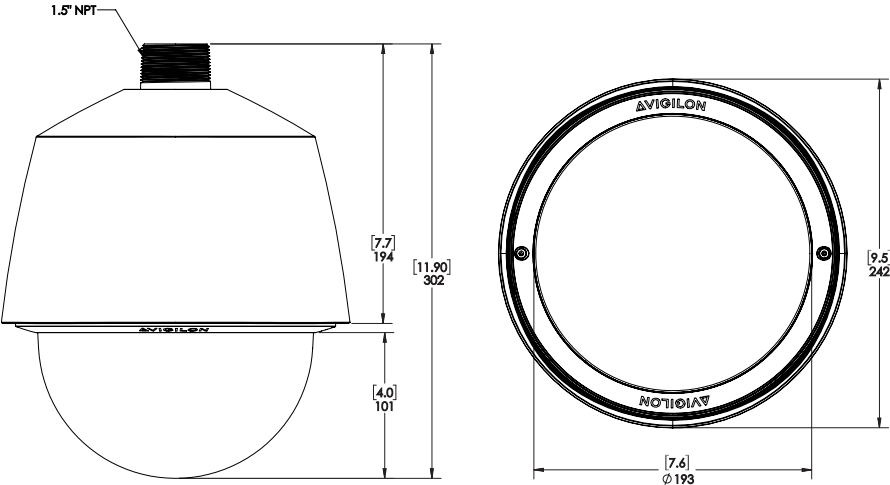
# Outline Dimensions

[X.X]	INCHES
X	MM

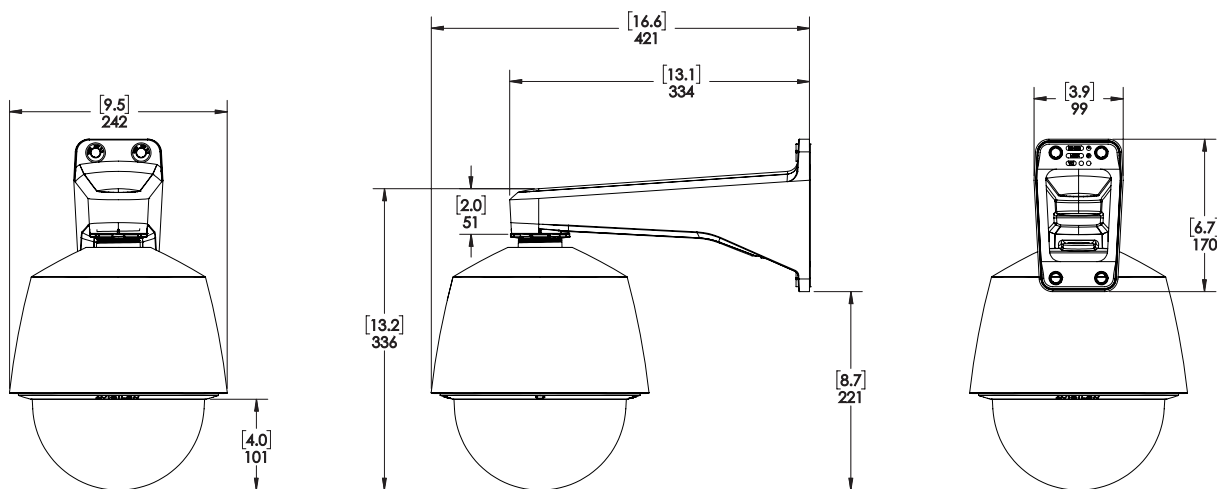
## In-Ceiling PTZ Dome Camera (H6A-PTZ-DC)



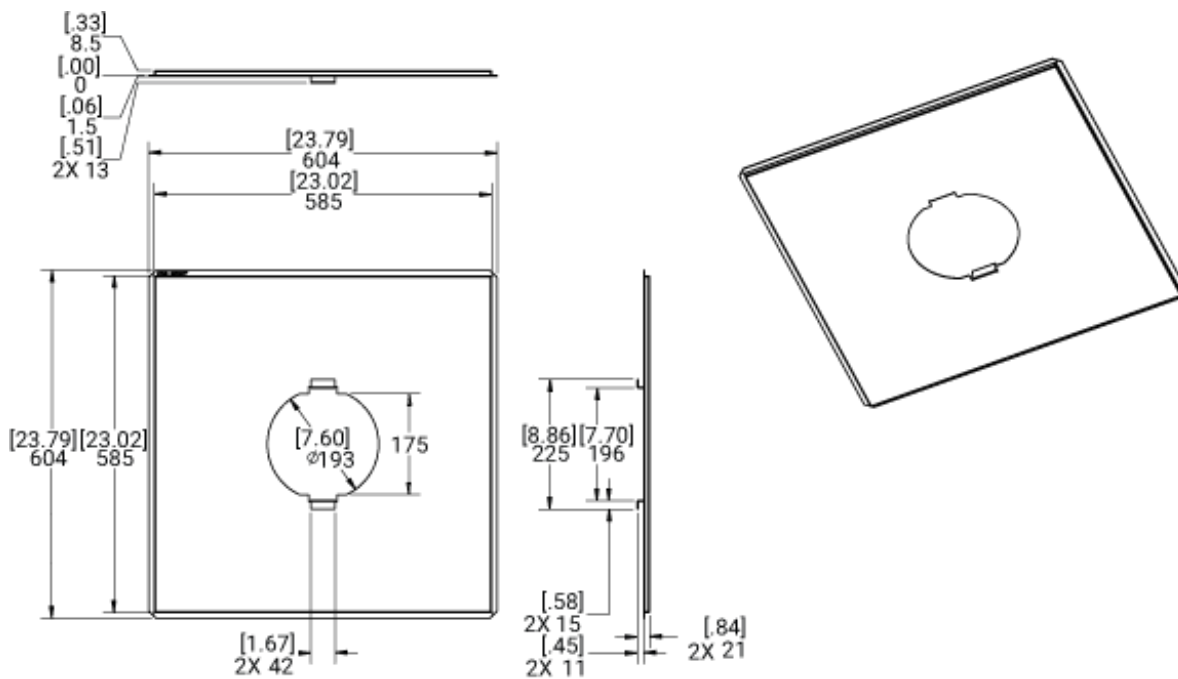
## Pendant PTZ Dome Camera (H6A-PTZ-DP)



## Pendant PTZ Dome Camera with Wall Arm (H6A-PTZ-DP + WLMT-1031)



## Metal Ceiling Panel (PTZ-CPNL-G)



## Ordering Information

CAMERA MODEL	DESCRIPTION	RESOLUTION (MEGAPIXELS)	DAYS OF STORAGE	TRUE WDR	IP66/67
2.0C-H6A-PTZ-DC30-30	CAM, H6A PTZ, In-Ceiling, 2MP, 30X	2.0	30 Days	✓	
2.0C-H6A-PTZ-DP30-30	CAM, H6A PTZ, Pendant, 2MP, 30X	2.0	30 Days	✓	✓
4.0C-H6A-PTZ-DC30-30	CAM, H6A PTZ, In-Ceiling, 4MP, 30X	4.0	30 Days	✓	
4.0C-H6A-PTZ-DP30-30	CAM, H6A PTZ, Pendant, 4MP, 30X	4.0	30 Days	✓	✓
2.0C-H6A-PTZ-DC30-60	CAM, H6A PTZ, In-Ceiling, 2MP, 30X	2.0	60 Days	✓	
2.0C-H6A-PTZ-DP30-60	CAM, H6A PTZ, Pendant, 2MP, 30X	2.0	60 Days	✓	✓
4.0C-H6A-PTZ-DC30-60	CAM, H6A PTZ, In-Ceiling, 4MP, 30X	4.0	60 Days	✓	
4.0C-H6A-PTZ-DP30-60	CAM, H6A PTZ, Pendant, 4MP, 30X	4.0	60 Days	✓	✓
2.0C-H6A-PTZ-DC30-120	CAM, H6A PTZ, In-Ceiling, 2MP, 30X	2.0	120 Days	✓	
2.0C-H6A-PTZ-DP30-120	CAM, H6A PTZ, Pendant, 2MP, 30X	2.0	120 Days	✓	✓
4.0C-H6A-PTZ-DC30-120	CAM, H6A PTZ, In-Ceiling, 4MP, 30X	4.0	120 Days	✓	
4.0C-H6A-PTZ-DP30-120	CAM, H6A PTZ, Pendant, 4MP, 30X	4.0	120 Days	✓	✓
2.0C-H6A-PTZ-DC30-365	CAM, H6A PTZ, In-Ceiling, 2MP, 30X	2.0	365 Days	✓	
2.0C-H6A-PTZ-DP30-365	CAM, H6A PTZ, Pendant, 2MP, 30X	2.0	365 Days	✓	✓
4.0C-H6A-PTZ-DC30-365	CAM, H6A PTZ, In-Ceiling, 4MP, 30X	4.0	365 Days	✓	
4.0C-H6A-PTZ-DP30-365	CAM, H6A PTZ, Pendant, 4MP, 30X	4.0	365 Days	✓	✓

ACCESSORIES	DESCRIPTION
WLMT-1031	Mount, Pendant Arm, 30 cm Long, 1.5 NPT
WLMT-1021	Pendant wall arm, 1.5" NPT female, 20 cm (7.8") long
PLMT-1001	Pole mount adapter
CRNMT-1001	Corner mount adapter
PD-9001GR/AT/AC-*-MSI	Indoor single port PoE+ 30W injector. Injector operational temperature range -20°C to +40°C (-4°F to 104°F). *NA/EU/UK/AU options available.
POE60U-1BTE	Gigabit 802.3bt 60 W PoE Injector
POE90U-1BT	PoE injector 802.3bt 90W Single Port
PTZ-CPNL-G	Metal Ceiling Panel for In-Ceiling Installations, Grey
PTZH6A-SMK50	Replacement smoked dome, 50% tint
PTZH6A-CLRBBL	Replacement clear dome



# Support

For product support, visit: [avigilon.com/support](https://avigilon.com/support) or to contact Sales, email [sales@avigilon.com](mailto:sales@avigilon.com).

To learn more, visit: [avigilon.com/h6a-ptz](https://avigilon.com/h6a-ptz), or to read the customer documentation, see [docs.avigilon.com/bundle/alta-video/page/Products/Cameras.htm](https://docs.avigilon.com/bundle/alta-video/page/Products/Cameras.htm).

Jun 2025 | Rev 3



**AVIGILON**

Motorola Solutions, Inc. 500 West Monroe Street, Chicago, IL 60661 U.S.A. [motorolasolutions.com](https://motorolasolutions.com)

© 2025, Avigilon Corporation. All rights reserved. MOTOROLA, MOTO, MOTOROLA SOLUTIONS and the Stylized M Logo are trademarks or registered trademarks of Motorola Trademark Holdings, LLC and are used under license. All other trademarks are the property of their respective owners.

20250611-en