



Paxton

Readers and Keypads





Paxton readers

Due to the wide range of site requirements, Paxton offers an extensive range of readers and keypads for use with our Switch2 and Net2 systems. This booklet gives an overview of our readers to enable the correct selection based on site requirements.

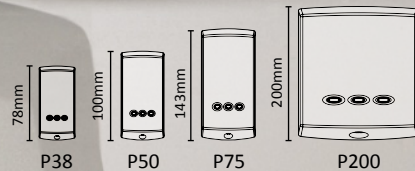
The majority of Paxton readers are treated to ensure the electronic components are completely sealed making them 100% resistant to water. All of our readers are designed to operate normally in a wide range of temperatures and are made and finished with materials that are UV stable. Our readers are suitable for external use, unless otherwise stated.

Paxton Access Ltd
Home Farm Road
Brighton
East Sussex
BN1 9HU

01273 811011
support@paxton.co.uk
www.paxton.co.uk

Contents

Proximity readers	
P series readers	5
Panel mount reader	7
Metal reader	9
Backbox reader	11
Marine reader	13
Long range reader	15
Universal reader	17
Architectural reader	19
Vandal proof reader	21
Net2 PaxLock	23
Magstripe readers	
Black plastic reader	25
Satin chrome reader	27
Keypads	
K series keypads	29
K series stainless steel keypads	31
Vandal resistant metal keypad	33
Proximity reader keypads	
KP series reader keypads	35
KP series MIFARE®	37
Other readers	
Energy saving reader	39
Tokens	
Access tokens	41
Hands free tokens	43



P series readers

The P series range of readers is our most popular and comprises four readers ranging in size from the P38 to the P200. A P38 fits neatly onto a door frame while the size of the P200 creates a larger token read range.

All P series readers are supplied with two fascias, one grey and one off-white. Other colours are available from your installer. These fascias can be replaced periodically to keep your reader looking brand new.

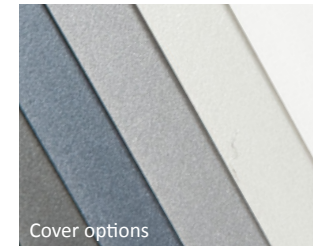
A mounting plate is available to allow the P75 reader to be mounted to a standard UK backbox. In addition to the standard pre-wired version, the P75 reader is also available with screw terminals. The screw terminal version is particularly suitable for new builds or refurbishment projects. Our Proximity P series MIFARE® reader is suitable for use with MIFARE®, EM4100 and Net2 tokens.

Scale drawing:

<http://paxton.info/116>

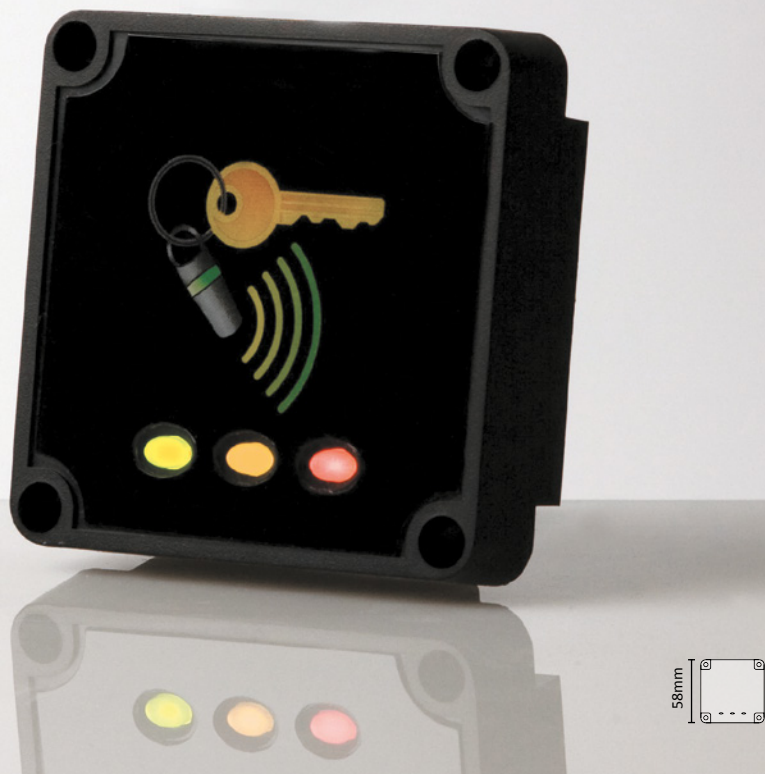
More information:

<http://paxton.info/1038>



Cover options





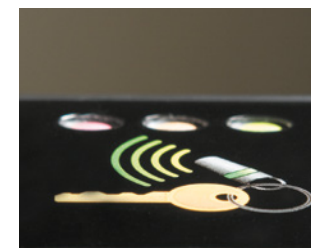
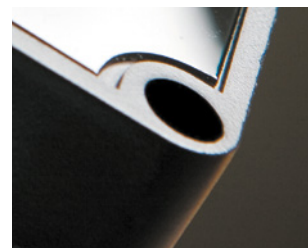
Panel mount reader

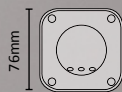
Audio and video entry panels are widely used in residential and commercial premises for controlling the access of visitors. Rather than having a separate proximity reader for controlling the access of residents or staff, the Panel mount reader is designed to be mounted within the door entry panel itself.

The reader has been designed to fit within a standard sized cut-out and most suppliers are able to provide suitably modified panels. As well as creating a more integrated installation, the Panel mount reader will also benefit from the vandal resistance offered by the metal panel within which it is housed.

Scale drawing: <http://paxton.info/1071>

More information: <http://paxton.info/1039>





Metal reader

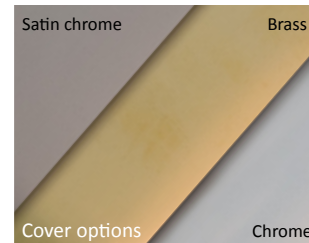
This rugged Metal reader is perfectly suited to a wide range of environments, from building sites to designer lobbies. The reader is encased in a solid metal housing with a durable clear window.

The reader's metal construction means that it will not be affected when mounted near metal objects, as is the case with other readers. This makes it the perfect solution for car park barrier posts or aluminium door frames.

The Metal reader is available in three different materials: chrome, satin chrome and brass.

Scale drawing: <http://paxton.info/789>

More information: <http://paxton.info/1040>





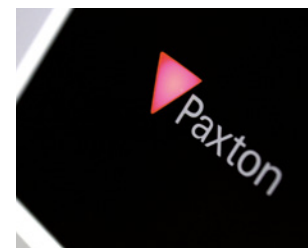
Backbox reader

The Backbox reader's new smart design can mount directly onto a standard backbox and provides a neat solution for interior use on a new build or refitted buildings.

The Backbox reader is supplied with screw terminals; it is ideal for refurbishment projects. The reader cable can be pulled through in advance, and is then fitted once all other works, such as plastering and painting, have been completed.

Scale drawing: <http://paxton.info/1769>

More information: <http://paxton.info/1766>





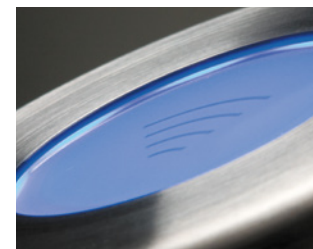
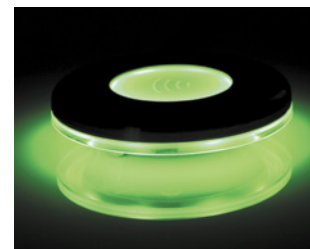
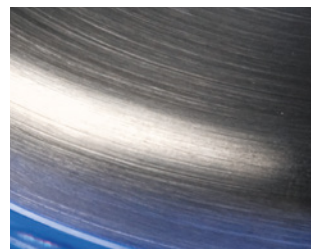
Marine reader

The Marine reader is housed in high quality marine grade stainless steel and is built to withstand the elements as well as look elegant. Although it has been specifically designed for marine applications such as yachts, it is suitable for use anywhere.

The high visibility blue LED lighting gives a stunning visual impact. It is also used to denote access permissions; flashing green for granted and red for denied.

Scale drawing: <http://paxton.info/790>

More information: <http://paxton.info/1042>





Long range reader

Long range refers to the reading distance between the reader and the token. A longer range can be desirable for a number of reasons. For example, at a car park barrier it is convenient to have your token read without having to leave your vehicle. Disabled users may require their tokens to be read without presenting them directly to the reader.

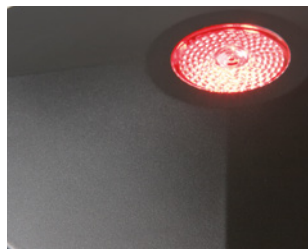
The Long range reader produces a read range of up to 5m. When using the Hands free key card, this can be extended up to 50m at the touch of a button. This is perfect if you want the barrier to start opening on approach.

The Long range reader also works as a close proximity reader. Therefore, hands free tokens need only be purchased for those users that require them.

The bright LED display is clearly visible from a distance and gives a clear indication of whether access has been permitted or denied.

Scale drawing: <http://paxton.info/843>

More information: <http://paxton.info/1043>





Universal reader

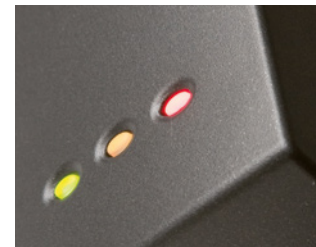
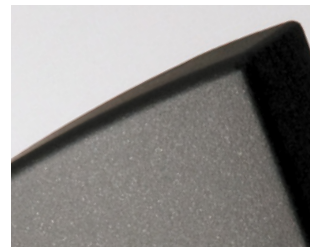
The Universal reader has been designed to read several different types of proximity token. This enables an existing system to be extended or replaced with our Net2 system whilst still using the same tokens.

As well as being compatible with Paxton tokens, the Universal reader can also read PAC tokens (all types) and any EM4100 tokens (a standard used by lots of manufacturers). The Universal reader can read all token types simultaneously so a mixture of different tokens can be used on a site.

The physical properties of the reader are exactly the same as the P38 reader from the P series range.

Scale drawing: <http://paxton.info/491>

More information: <http://paxton.info/1044>





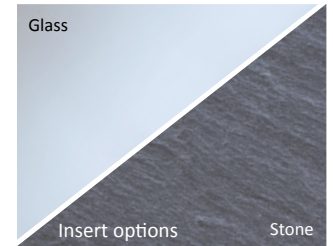
Architectural reader

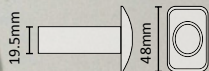
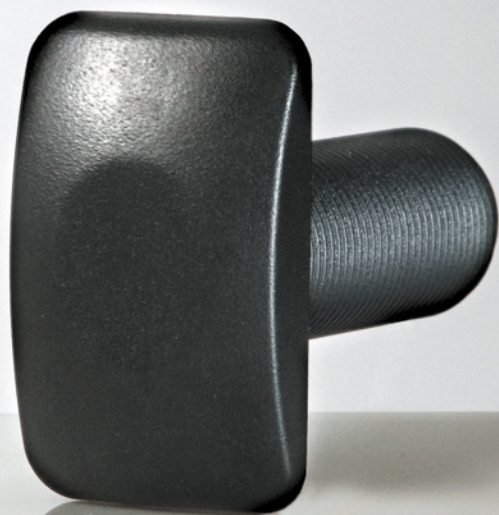
This is a unique reader in that its appearance can be tailored to its environment. The reader consists of two parts; the reader housing and the insert. Three inserts are available from Paxton in wood, glass or stone, but others can be created in the style and material of your choice. The reader itself is available with a choice of three bezel finishes; matte black, gunmetal grey and satin chrome.

The installation of this reader gives a very low profile for a sleek and elegant look. The three white LEDs change colour to indicate access permitted or access denied.

Although the reader electronics are waterproof, the use of natural materials might make it unsuitable for external environments. This reader is most at home in a swish reception or lobby.

Scale drawing - Reader: <http://paxton.info/788>
Scale drawing - Insert: <http://paxton.info/846>
More information: <http://paxton.info/1045>





Vandal proof reader

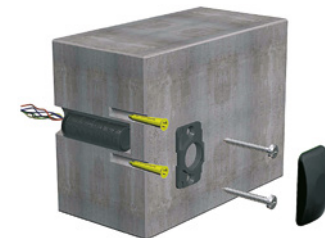
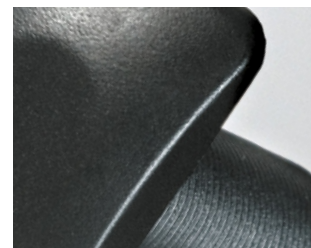
As its name implies, this reader is suitable for vandal-prone environments. The vandal resistance of this reader comes not from a chunky metal design, but from a unique form that allows the reader itself to be embedded in the wall, and so not exposed to abuse. If you can't get to it, you can't damage it.

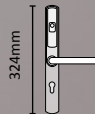
The Vandal proof reader is made up of two parts; a cylindrical proximity reader and a cap to mark the position of the reader. The caps are supplied in black and white, with other colours available from your installer. The Vandal proof reader can be mounted in several ways depending on the exact requirements of the site, the illustration below shows one example.

Due to the small size of the Vandal proof reader, it is also suited to environments where it is important for access control readers to be mounted discreetly.

Scale drawing: <http://paxton.info/1073>

More information: <http://paxton.info/1046>





Net2 PaxLock

Net2 PaxLock is a stylish all in one wireless solution which combines an access control unit and reader. Net2 PaxLock communicates with Net2 software at a central point using secure wireless technology.

Net2 PaxLock is battery powered which means that the unit is totally wireless, as it does not require mains power. Perfect for securing internal doors, the attractive slimline unit is designed to complement a range of environments.

Net2 PaxLock fits a standard Euro lock cylinder (sold separately), so can easily replace an existing door handle. It comes in several versions; Paxton and MIFARE® versions, both come with or without the option of key override.

Scale drawing: <http://paxton.info/1811>

More information: <http://paxton.info/1808>





CARDLOCK black plastic reader

The CARDLOCK black plastic reader is housed in a smart cover that fits discreetly into a number of different environments.

This reader is compatible with magstripe cards, the most economical type of access control card on the market. Their use makes the reader ideal for those sites with a high rotation of cards.

The CARDLOCK reader is suitable for external use. A user physically swipes their card through the reader.

Scale drawing: <http://paxton.info/1057>

More information: <http://paxton.info/1047>





CARDLOCK satin chrome reader

The CARDLOCK satin chrome reader has an exceptionally smart appearance that makes it suitable for a number of different environments. The cover is also replaceable to keep the reader looking fresh and new.

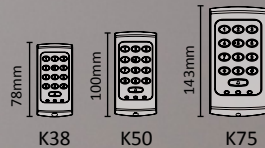
This reader is compatible with magstripe cards, the most economical type of access control card on the market. Their use makes the reader ideal for those sites with a high rotation of cards.

The CARDLOCK reader is suitable for external use. A user physically swipes their card through the reader.

Scale drawing: <http://paxton.info/791>

More information: <http://paxton.info/1048>





K series keypads

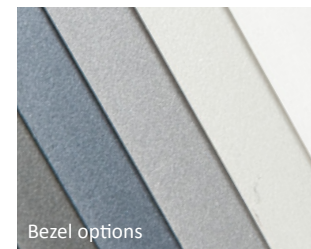
The K series range of keypads have a neat functional appearance and are available in three sizes that make them suitable for the majority of sites. Each keypad has clearly numbered back-lit buttons. Each size is useful for different situations. The K38 fits neatly onto a door frame while the larger K75 has big, easy to press buttons.

All K series keypads are supplied with two bezels, one dark grey and one off-white. Replacement bezels in a range of colours are available from your installer.

A mounting plate allows the K75 keypad to be mounted to all standard UK backboxes. In addition to the usual pre-wired version, the K75 keypad is also available with screw terminals. This is especially useful for system refits or for new builds with pre-installed cabling.

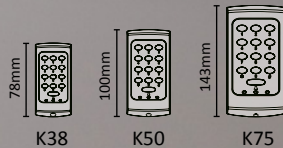
Scale drawing: <http://paxton.info/152>

More information: <http://paxton.info/1049>



Bezel options





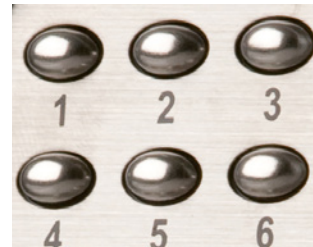
K series stainless steel keypads

The K series stainless steel keypad has a metal bezel and fascia. Their understated appearance and availability in three sizes makes them the ideal keypad for a variety of environments.

Each keypad within the range has a low profile (less than 16mm) that guarantees a seamless look.

A mounting plate allows the K75 keypad to be fixed to a standard UK backbox. In addition to the usual pre-wired version, the K75 keypad is also available with screw terminals. This is especially useful for system refits or for 'new builds' with pre-installed cabling.

Scale drawing: <http://paxton.info/152>
More information: <http://paxton.info/1050>





Vandal resistant metal keypad

This solid metal, heavy duty keypad has been developed to stand up to abuse and is perfect for areas susceptible to vandalism. Its robustness also makes it suitable for 'physical' environments where knocks and scrapes are inevitable.

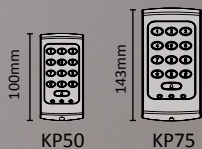
The keypad incorporates a back-lit display and embossed numbers to facilitate the accurate entering of a PIN (or code) even at night. The back-light is also used to denote access permissions; flashing green for access granted and red for access denied.

The standard mounting plate is used to fix the keypad to a wall or a UK backbox. The additional mounting plate incorporates screw terminals allowing cabling to be run in advance. This is useful for new builds or refurbishment projects. The Vandal resistant metal keypad is also supplied with security screws (and tool) to avoid tampering.

Scale drawing: <http://paxton.info/1079>

More information: <http://paxton.info/1099>





KP series reader keypads

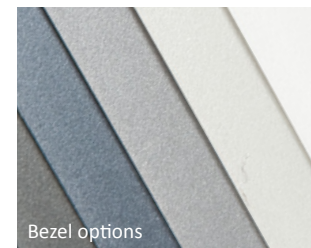
The KP range consists of an all-in-one keypad and a proximity reader. They're available in two different sizes and offer more advanced security as they allow for card plus PIN (or code) with a single reader.

Each keypad has clearly numbered back-lit buttons and is supplied with a choice of dark grey or off-white bezels. Other colours are available from your installer.

A UK backbox mounting plate is available for use with the KP75. Another version of the KP75 is available with screw terminals that makes it suitable for sites with pre-installed cabling.

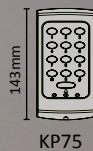
Scale drawing: <http://paxton.info/1064>

More information: <http://paxton.info/1051>



Bezel options





KP series MIFARE® reader

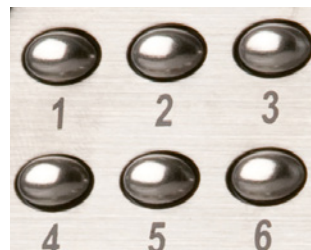
The KP series MIFARE reader is a metal housed keypad and proximity reader primarily for external use. It has a metal bezel and fascia.

It reads MIFARE 1k®, MIFARE 4k®, MIFARE Ultralight®, MIFARE Ultralight C®, MIFARE® DESFire® and MIFARE® DESFire® EV1 tokens.

A mounting plate allows the KP75 keypad to be fixed to a standard UK backbox. The KP75 has a low profile (less than 16mm) that guarantees a seamless look.

Scale drawing: <http://paxton.info/2384>

More information: <http://paxton.info/2345>





Energy saving reader

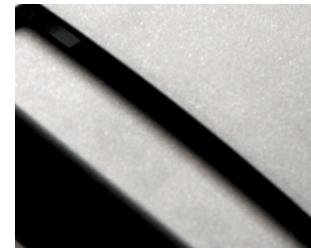
The Energy saving reader can be used as an electrical switch to control facilities such as lights and air conditioning. These facilities can be turned on by placing a valid proximity card in the holder on the front of the reader. Removing the card turns the equipment off. Of course only cards that have been given the necessary permissions can use the equipment.

Typical uses for the Energy saving reader include using access cards to switch on lights, air conditioning and audio/visual equipment in a meeting room. Other uses include restricting who is able to operate equipment that requires specialist training such as in a gym or a factory.

Using the Energy saving reader is an excellent way to get the most out of your access control system and cut down on energy wastage.

Scale drawing: <http://paxton.info/1075>

More information: <http://paxton.info/1055>



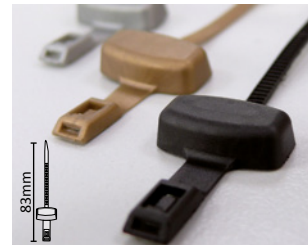


Access tokens

At Paxton we offer a varied choice of tokens for a range of needs. Our best-selling keyfobs are smart in appearance and come with a lifetime guarantee. They are so robust, they can even go through the wash!

Watchprox is a miniature proximity token that fits discreetly to your wristwatch so you always have a token on you. Paxton cards can be used with our card designer software, meaning your access cards double up as ID cards.

More information: <http://paxton.info/1399>





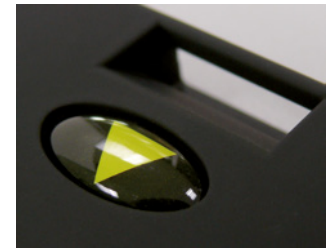
Hands free tokens

Hands free access control means you do not have to present your token directly to a reader to gain access. The token can be read from within a pocket or a handbag, no hands are required.

This is great for places where swift access is a must or where access for disabled people is required. Essentially, hands free is perfect in any situation where a user has difficulty directly presenting their token for entry. Paxton hands free tokens work in conjunction with a Hands free interface to unlock a door, using unique wireless technology.

The slimline tokens can be attached to a keyring, wheelchair or stored discreetly about your person.

More information: <http://paxton.info/549>





Paxton Access Ltd
Home Farm Road
Brighton
East Sussex
BN1 9HU

01273 811011
support@paxton.co.uk
www.paxton.co.uk

All information correct at the point of publication, but may be subject to change without notice.

MIFARE is a registered trademark of NXP B.V. and is used under license.